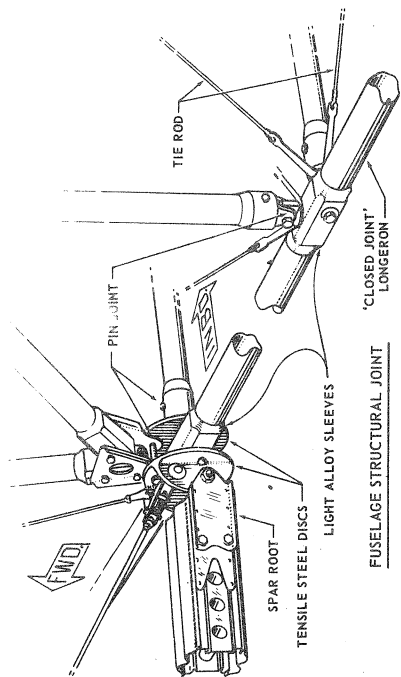


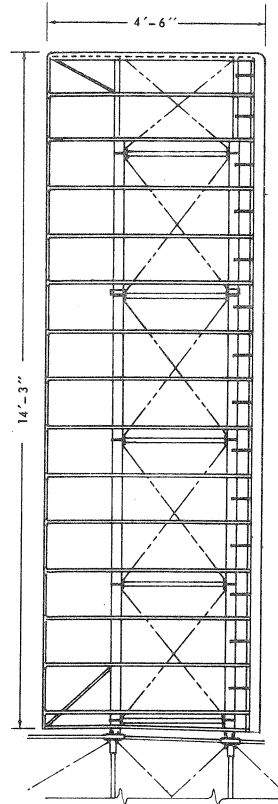
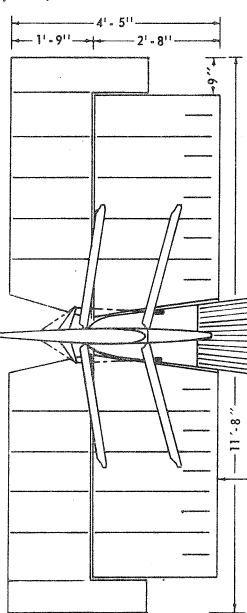
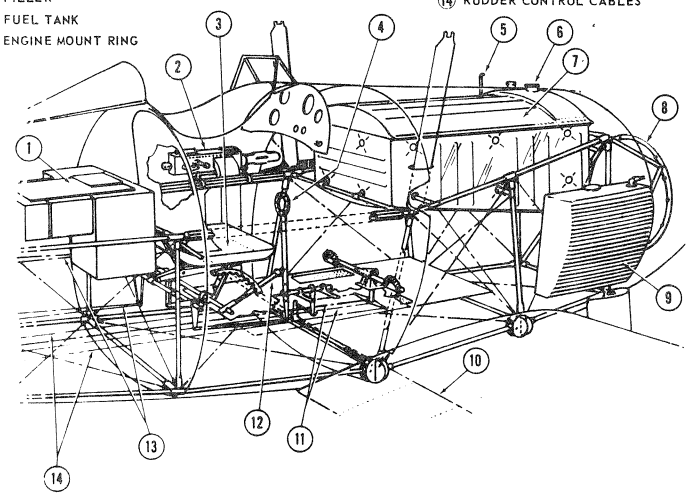
1927 BOULTON-PAUL 'PARTRIDGE' FIGHTER
 Sheet 1 Scale: 1/4" = 1'
 RESEARCHED AND DRAWN 6 80
 BY JIM DUNAVENT
 FUSELAGE DETAILS, SECTIONS: FRONT ELEVATION.

STRUCTURE OF THE "PARTRIDGE", INCLUDING WING SPARS AND RIBS, AS WELL AS FUSELAGE TRUSSING WAS ENTIRELY OF METAL. FUSELAGE FAIRING FORMERS AND FORWARD SECTION COWLING (WITH EXCEPTION OF THE SHEET STEEL GUN TUNNELS) WERE PLYWOOD.

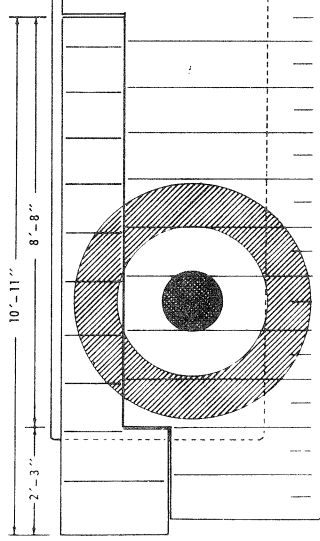


- 1 RADIO EQUIPMENT
- 2 PORT MACHINE GUN
- 3 PARACHUTE SEAT PAN
- 4 CONTROL COLUMN GRIP
- 5 VENT
- 6 FILLER
- 7 FUEL TANK
- 8 ENGINE MOUNT RING

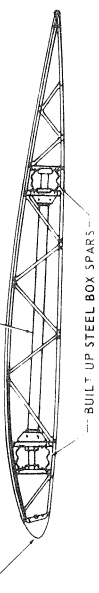
- 9 OIL TANK AND INTERCOOLER
- 10 AILERON CONTROL CABLE
- 11 TO STEERABLE TAILSKID
- 12 SEAT ADJUSTMENT HANDLE
- 13 ELEVATOR CABLES
- 14 RUDDER CONTROL CABLES



LOWER WING PANEL STRUCTURE



ALUMINUM SHEET LEADING EDGE



TUBULAR COMPRESSION MEMBER

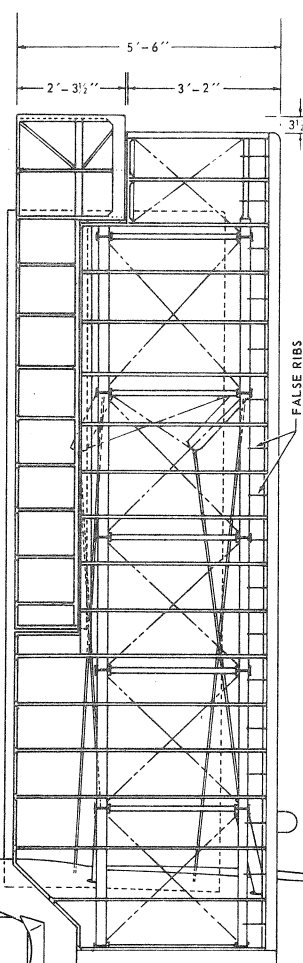
PLYWOOD COWLING TO THIS POINT

BRISTOL 'JUPITER' SERIES VII ENGINE 450 HP (SUPERCHARGED)

ALUMINUM ENGINE COWLING

HEAVY GAUGE METAL DUMMY EXHAUST RING

TOTAL SPAN (UPPER) - 35'-0"



FALSE RIBS