

WING NUTS (SHOWN AS D-10) UPPER WING STRUTS WERE THEN BOLTED ON, AND GUNS INSTALLED, ASSEMBLING CLIP TUBES THROUGH HOLES IN CONNING. SEVERAL VERSIONS OF THIS CENTER-SECTION CONNING WERE USED.

INDIVIDUAL GUN TRIGGERS
 AUXILIARY HANDLE
 -AUTOMATIC NOTE-
 IT IS MOST SINCERELY HOPED THAT THE SCALE DRAWINGS AND DATA COMPILED HEREIN, HAS DESIGNED IN THE MOST ACCURATE AND AUTHENTIC DESCRIPTION OF THE FOKKER TRIPLANE AND RICHTHOFEN'S DEATH PLANE, BROUGHT TO LIGHT IN THIS TIME. MATERIAL COLLECTED SINCE 1950, IN ADDITION TO ALL POSSIBLE SOURCES, WAS CHECKED AND COMPARED, TO ACHIEVE THIS DESIRABLE PURPOSE.
 J. NICO

CONTROL SYSTEM OF FOKKER DR-1 WAS SIMILAR TO D-7, VARIATIONS ENDED, PULLEY CONTROL CABLE ASPECTION OPENINGS AT UPPER & LOWER SURFACES. VERY PLEAS. SIGNALING CONTROLDIS VALDER. CORDON TYPE MAGNETIC INDUCTION COMPASS. BLACK & WHITE SQUARES, NOT USED ON ANY OF RICHTHOFEN DR-1'S.

PARTLY SHOWN BELOW, IS THE EFFECT USED BY ERICH LOMENHARDT, 9'-10"

BLACK & WHITE STRIPED TAIL & FLOWN, WHEN BORROWED, BY RICHTHOFEN.

PAIRING DETAIL USED ON DR-1 & DR-1'S AT FRONT OF BODY.

TAIL DETAIL.

AIRAGE INC. 55 FIFTH AVE. NEW YORK, N.Y.
 SCALE: 1/8" = 1'-0"
 GENERAL ARRANGEMENTS AND DETAILS
 1918 GERMAN IMPERIAL AIR SERVICE.
 DRAWING BY: J. NICO
 Fokker Dr-1
 Copyright © 1952
 Joseph Nico

MIDDLE WING, LIKE LOWER, WAS INSTALLED BY FOUR BOLTS TO UPPER BODY LONGERONS. AFTER WING WAS FIXED, THE ONE-PIECE TYPE CONNING AS SHOWN ABOVE WAS PLACED & SECURED BY USE OF

BUILT-UP RIBS
 15 MM STEEL TUBE
 WHITE AREA 4" x 1"
 ANTI-RATTLE TIE DETAIL.

TIME

SPAN 23'-7"

CENTER SECTION 7'-18"

WHITE AREA NOT USED ON DR-1 SERIAL N° 2009/17. WITH STRAIGHT CROSS.

AFTER RICHTHOFEN'S DEATH, JAGDSTAFFEL 11 DISCONTINUED THE ALL-SCARLET COLOR SCHEME USED ON MANY OF IT'S PLANES. THE STAFFEL WAS LED FOR A SHORT TIME BY LT. HANS WEISS (SHOT DOWN BY A SOP. CAMEL, MAY 2, 1918.) WHO ADOPTED AN ALL WHITE FOK. DR-1 WITH (CONT)

SPAN 18'-9"

UPPER WING PLANE, INSIGNIA, LOWER SURFACE ONLY
 WHITE AREA 4'-1"

LOWER WING WAS ASSEMBLED IN ONE PIECE SPAN. IT WAS INSTALLED BY BOLTS TO ACCESS UNDER BODY. LINE D-III ALUMINUM SHEET COVERED ATTACH AREA.

SECTION OF SPARE.

SPAN 20'-6"

SPAN 16'-9"

SPAN 4'-9"

TRACK 5'-3"

COUL: LATIN CROSSES, WHICH WAS COMPLEMENTARY TO HIS NAME, MEANING WHITE IN ENGLISH. LT. HANS KIRCHSTEIN, STA. N° 6, OF RICHTHOFEN JAGDGESCHWADER 7, HAD HIS DR-1 PAINTED ALL

OVER WITH BLACK & WHITE DIAGONAL STRIPES, HOPING THIS EFFECT WOULD CONFUSE ENEMY AIRMEN. THE STRIPED DR-1 WAS PROMPTLY DUBBED BY FELLOW PILOTS, "THE OPTICAL ILLUSION". KIRCHSTEIN, CREDITED

THANK YOU ALSO, REFER L. GRAY, OF LUDLOW, BOSS, ENGLAND, & ANGELO ROSSO, MIT VERBANK, N.Y. FOR YOUR KIND HELP.

SKETCH SHOWING ENGINE COUL CONFIGURATION, NOTE JOINTS & CURVATURE

DR-1 COUL SYSTEM SHOWN IN PLAN VIEW

FLOOR BOARD

FOKKER DR-1 WING SECTION 3'-3" CHORD 3'-3 3/8" (SCALE DRAWING PUBLISHED, 3TH SIZE)

ABOVE IS MASKED COUL USED BY WERNER VOSS. BELOW, TWO-PIECE COUL VERSION POPULARLY USED.

MAIN SPARS OF WINGS CONSISTED OF TWO 80# SPARS OF 1/2" DIAMETER FINISHED 6" DIA. & 3" DIA. WERE CONNECTED AT TOP & BOTTOM BY LAYERS OF 3/8" 3-PLY FRANKLIN BUSHING TAPERED FROM 2 1/2" TO 2"

ILLUSTRATED AT RIGHT IS A FOKKER DR-1 EXPERIMENTAL TYPE, (WING TIPS & STRUTS NOT SHOWN) WHICH WAS BEING TESTED AT THE JOHANNISTHAL AIRDROME (BERLIN) IN 1918.

WITH 27 ALLIED PLANES, WAS KILLED IN JULY OF 1918, WHILE BEING FERROED FROM A GERMAN AIRCRAFT PARK IN THE REAR CORNER OF A TWO SEATER PLANE. FRITZ LEBERZER, BRUNO'S BROTHER, FLEW AN ALL BLACK & WHITE CHECKERED DR-1 FOR JAGD. 20. EA. SCORES: WEISS, 16. FRITZ LEBERZER, 11.

ANOTHER COUL VERSION, NOT OFTEN USED (AS COUL USED AS AN EXPERIMENTAL FOR BETTER COOLING)

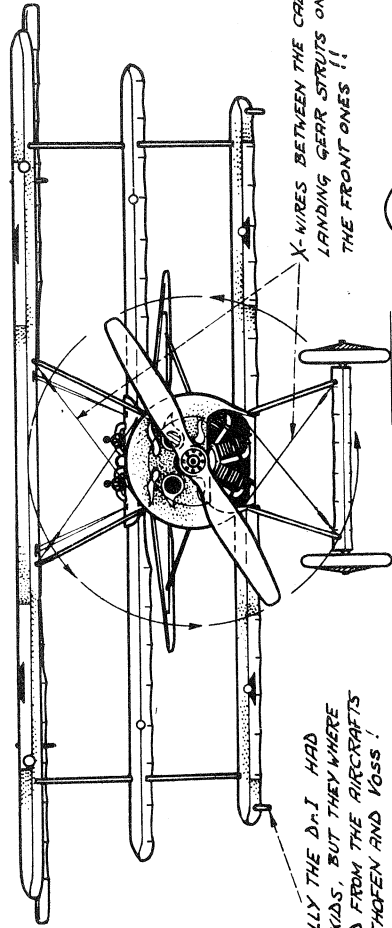
AND WAS FITTED WITH A 160 H.P. SIEMENS-HALSKE SH-3 ENGINE AND 4 BLADED AXIAL PROPELLER. NOTE WINDSHIELD, AND ABSENCE OF GUNS AND AUXILIARY AXLE PLANE. IT IS WONDERED, WHAT THIS PLANE MAY HAVE DONE IN RICHTHOFEN'S HANDS.

PLANES WORTH MODELING

61-19-12-57

POWER PLANT

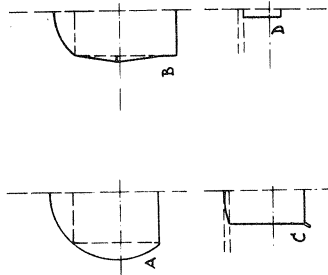
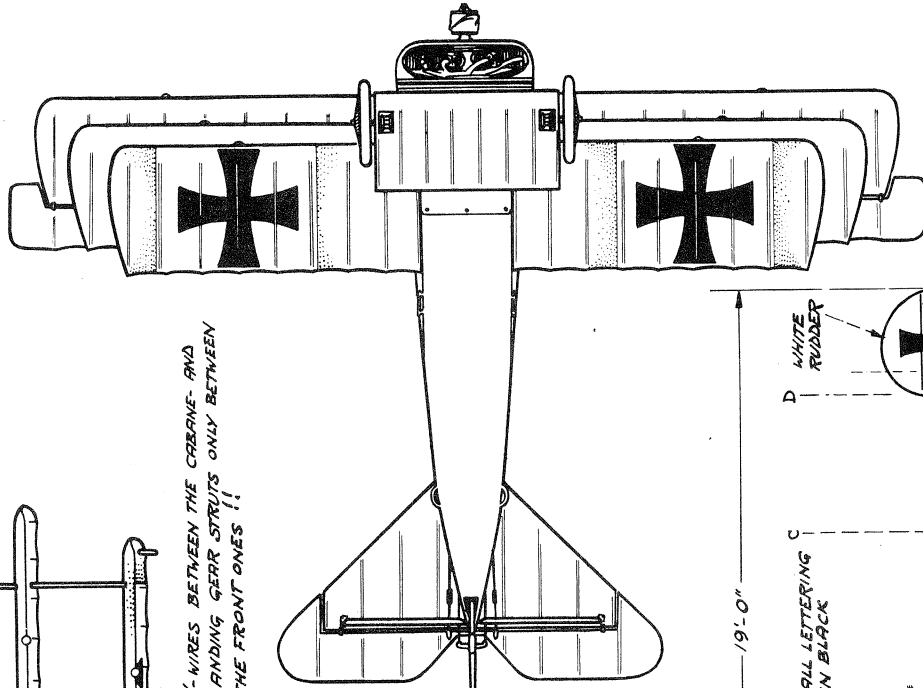
ONE 110-HP OBERURSEL ROTARY
(BUILT UNDER A PRESWAR LICENSING
AGREEMENT WITH LE Rhône)



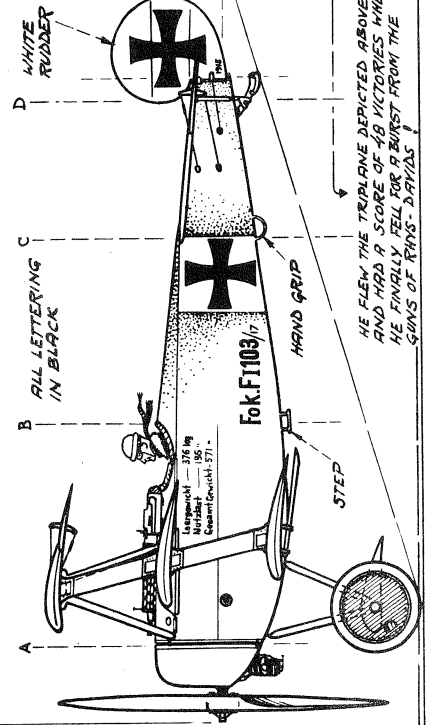
X-WIRES BETWEEN THE CABANE AND
LANDING GEAR STRUTS ONLY BETWEEN
THE FRONT ONES !!

ORIGINALLY THE Dr.I HAD
WING-SKIDS, BUT THEY WERE
REMOVED FROM THE AIRCRAFTS
OF RICHTHOFEN AND VOSS!

VERY CARTRIDGE
HOLDER



19'-0"



WHITE
RUBBER
D
C
B
A

ALL LETTERING
IN BLACK

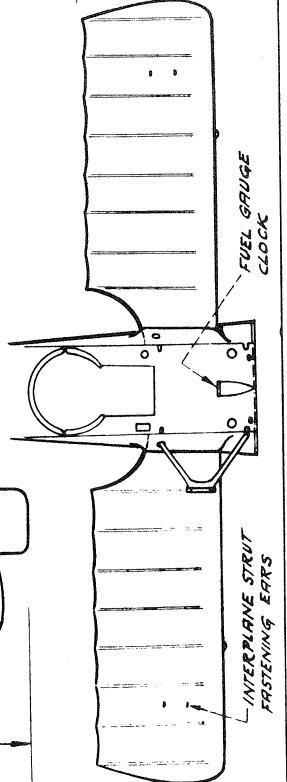
Hand GRIP

STEP

Lt. WERNER VOSS PUT ON WHAT
IS CONSIDERED THE GREATEST Dr.I-
FIGHT ON RECORD THE DAY HE FOR
NEARLY 10-MINUTES BOUNCED
AROUND WITH FIVE OF THE ALLIES
BEST PILOTS, M. GUDEN, LEWIS,
MAXWELL, BISHMAN AND RAY DAVIDS.

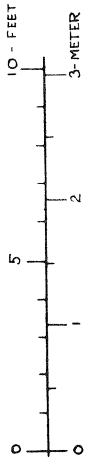
WW.I 1917 Fokker Dr.I (V.4)
DRAWN BY
SCALE: 1:60

COLORSCHEME:
Lt. WERNER VOSS' FOKKER Dr.I SERIALLED
F1 103/17 WAS DAPED IN AN ALL-OVER
SILVER-BLUE WITH THE BLACK CROSSES ON
WHITE PANELS. THE WHEEL-DISCS WERE
RED, AND A "FACE" WAS PICKED OUT IN
WHITE ON THE FRONT OF THE CONSOLE.



INTERPLANE STRUT
FASTENING EARS

FUEL GAUGE
CLOCK



23'-7"