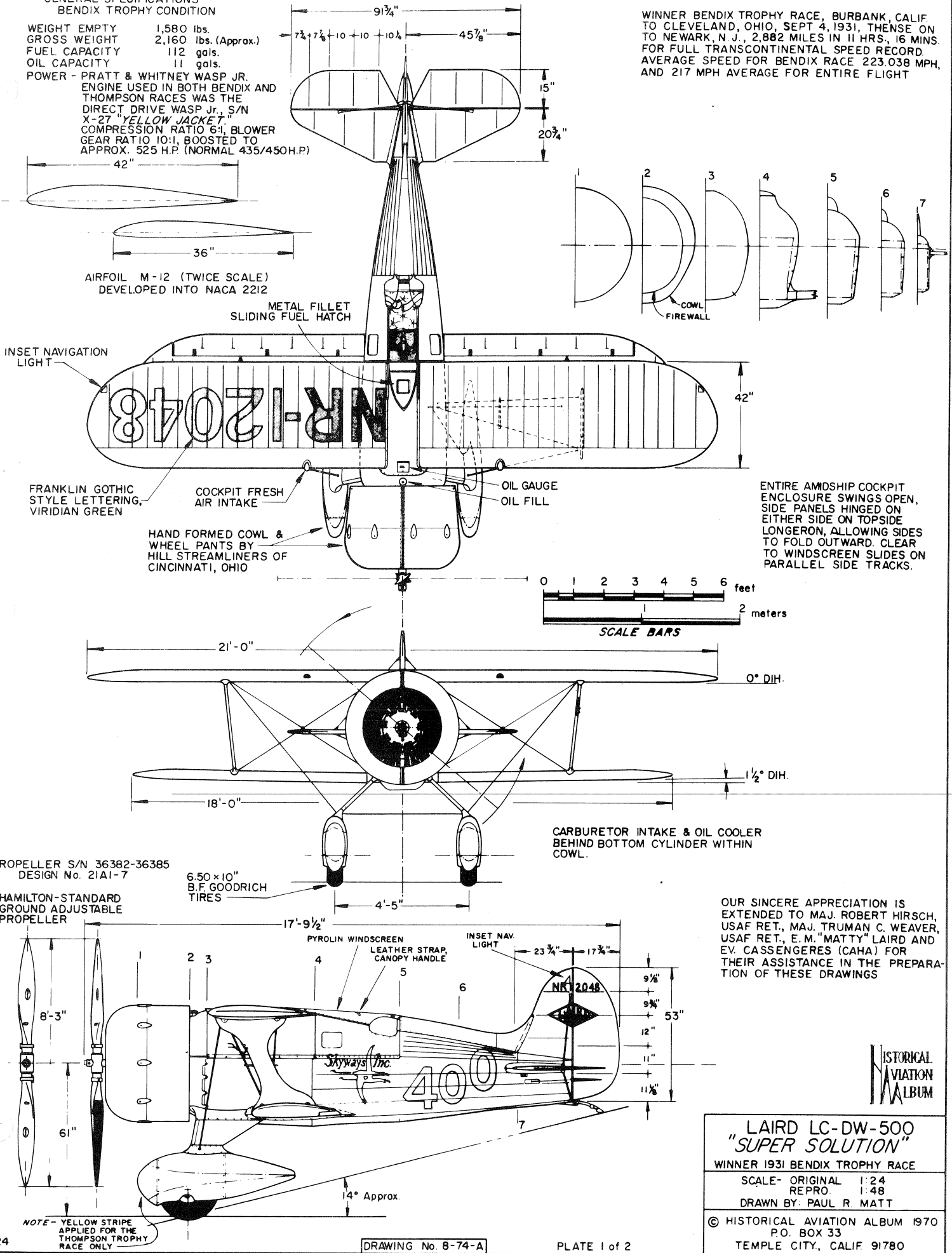


GENERAL SPECIFICATIONS
BENDIX TROPHY CONDITION

WEIGHT EMPTY 1,580 lbs.
GROSS WEIGHT 2,160 lbs. (Approx.)
FUEL CAPACITY 112 gals.
OIL CAPACITY 11 gals.
POWER - PRATT & WHITNEY WASP JR.
ENGINE USED IN BOTH BENDIX AND THOMPSON RACES WAS THE DIRECT DRIVE WASP Jr., S/N X-27 "YELLOW JACKET". COMPRESSION RATIO 6:1, BLOWER GEAR RATIO 10:1, BOOSTED TO APPROX. 525 H.P. (NORMAL 435/450H.P.)

WINNER BENDIX TROPHY RACE, BURBANK, CALIF. TO CLEVELAND, OHIO, SEPT 4, 1931, THENSE ON TO NEWARK, N. J., 2,882 MILES IN 11 HRS., 16 MINS. FOR FULL TRANSCONTINENTAL SPEED RECORD. AVERAGE SPEED FOR BENDIX RACE 223.038 MPH, AND 217 MPH AVERAGE FOR ENTIRE FLIGHT



OUR SINCERE APPRECIATION IS EXTENDED TO MAJ. ROBERT HIRSCH, USAF RET., MAJ. TRUMAN C. WEAVER, USAF RET., E. M. "MATTY" LAIRD AND EV. CASSENGERES (CAHA) FOR THEIR ASSISTANCE IN THE PREPARATION OF THESE DRAWINGS



LAIRD LC-DW-500 "SUPER SOLUTION"	
WINNER 1931 BENDIX TROPHY RACE	
SCALE- ORIGINAL	1:24
REPRO	1:48
DRAWN BY: PAUL R. MATT	
© HISTORICAL AVIATION ALBUM 1970	
P.O. BOX 33	
TEMPLE CITY, CALIF 91780	

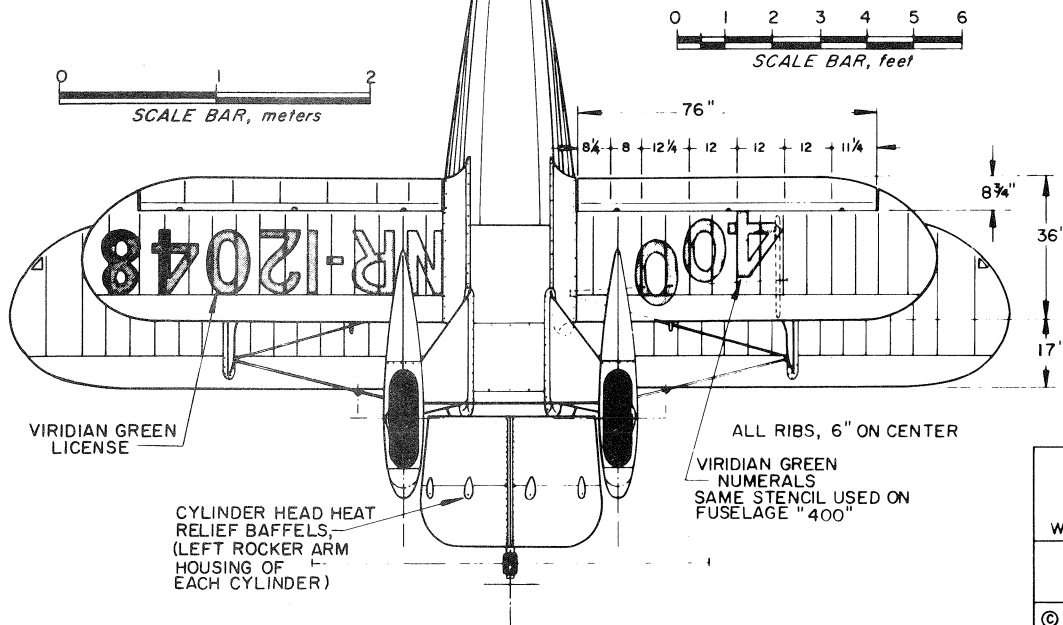
NOTE - YELLOW STRIPE APPLIED FOR THE THOMPSON RACE ONLY

FAIRED RUDDER HORNS
INTERNAL TUBULAR STEEL CONSTRUCTION

COLORING NOTES

FUSELAGE, STRUTS, WHEEL PANTS, VERTICAL TAIL SURFACES - BRIGHT VIRIDIAN GREEN
WINGS, HORIZONTAL TAIL SURFACES, WHEEL PANTS TRIM, No. 400 - "KODAK" YELLOW
"Skyways Inc.", FLAMINGOS DECOR, - DEEP RED
LICENSE ON RUDDER & FIN - BLACK

FOR LAIRD EMBLEM DETAILS SEE HISTORICAL AVIATION ALBUM, VOL. VII, LAIRD "SOLUTION," BACKGROUND OF DECAL BEING CLEAR VARNISH CHANGES THIS AREA, AND THIS ALONE, TO SUPER SOLUTION GREEN.



HISTORICAL AVIATION ALBUM

LAIRD LC-DW-50C
"SUPER SOLUTION"

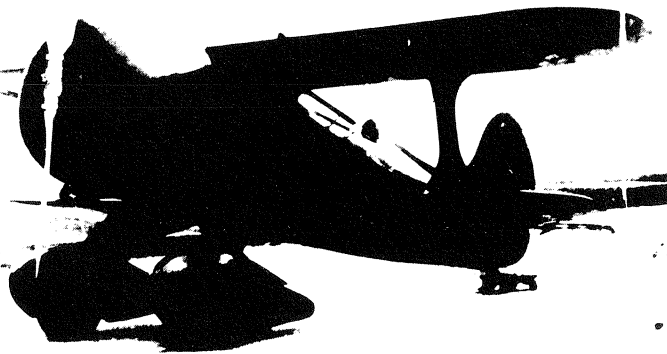
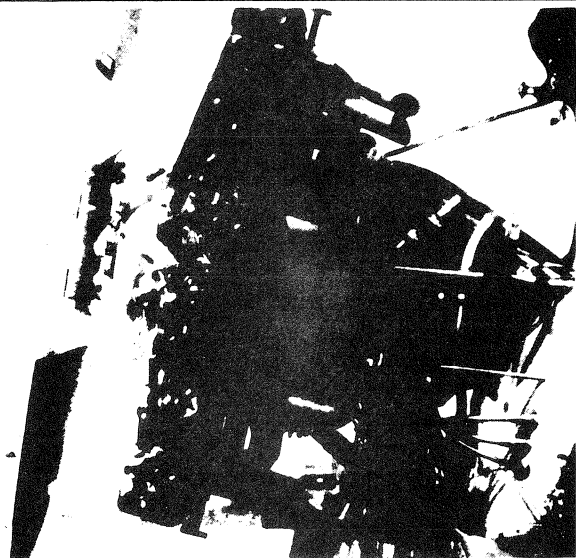
WINNER 1931 BENDIX TROPHY RACE

SCALE - ORIGINAL 1:24
REPRO. 1:48
DRAWN BY: PAUL R. MATT

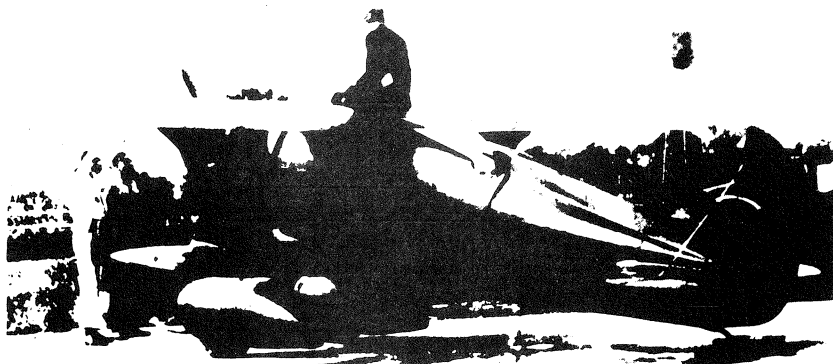
© HISTORICAL AVIATION ALBUM 1970
P.O. BOX 33
TEMPLE CITY, CALIF. 91780

DRAWING No. 8-74-A

PLATE 2 of 2



All photos courtesy of P & W via CAHA



THE SUPER SOLUTION AT THE
P & W AIRCRAFT PLANT, OCT. 1931