

TYPICAL VEGA SEAPLANE STRUTS & FLOATS ARRANGEMENT  
 FLOATS WERE STRAIGHT OR ARCH BACK. "B" TAIL ASSEMBLY  
 HAD EXTRA FIN INSTALLED AS SHOWN. "C" TAIL WAS  
 DEVELOPED FOR SEAPLANE VERSION WITH NO FIN AREA  
 BELOW HORIZONTAL E. FAMOUS SEAPLANES WERE  
 "STARLIGHT", "FRIENDSHIP", "SMILING TARA", AND OTHERS

NC-47M WAS SOLID RED WITH  
 BLACK TRIM & YELLOW FIN  
 STRIPPING ON EDGE OF TRIM  
 FLOATS & STRUTS WERE  
 NATURAL ALUMINUM

NC-47M WAS FIRST TRACE  
 VEGA BUILT SERIAL # 40.  
 IT IS STILL FLYING AND HAS  
 OVER 25,000 AIRFRAME HOURS

DURING TAKE-OFF AND LANDING, BEAMA IN  
 CABIN WAS LOWERED AND RAISED TO  
 REINFORCE BULKHEAD (SECTION "F" IN  
 PAGE 2 OF VEGA PLANS - NOV. '55 ISSUE  
 OF MODEL AIRPLANE NEWS)

WHITE  
**ALASKA-WASHINGTON  
 AIRWAYS**

STRAIGHT BACK  
 WATER RUDDER WAS RAISED DURING  
 TAKE-OFF AND LANDING

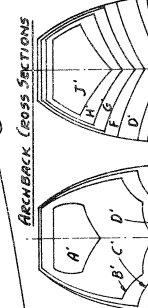
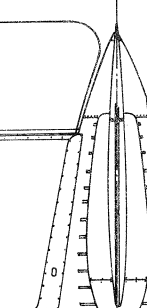
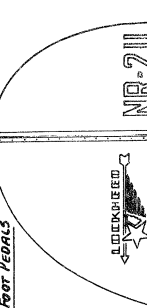
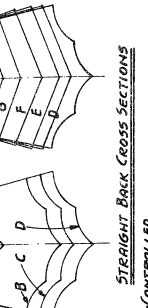
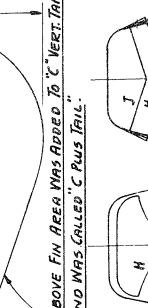
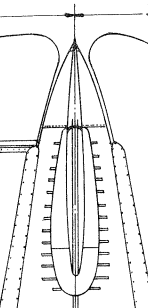
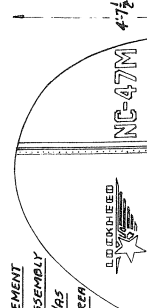
STRAIGHT BACK  
 ARCH BACK  
 SYMMETRICAL ABOUT  
 VERTICAL CENTERLINE

RUDDER HOIST-CONTROLLED  
 BY CABLES TO FOOT PEDALS

MODIFIED SLIDING HATCH

STRAIGHT "Y"  
 REAR CROSS WIRES  
 HORIZONTAL CROSS WIRES  
 INVERTED VEE STRUT

TRAILING AERIAL  
 REF. LINE



AIR AGE INC., 55 FIFTH AVE., NEW YORK 17, N.Y.  
 SCALE: 1/4" = 1'-0"  
 GENERAL ARRANGEMENT  
 VEGA AND SIRIUS SEAPLANES  
 PAGE 4 OF 4  
 DRAWN BY...  
 WILLIAM A. WYLLAM  
**LOCKHEED**  
 BUILT 1926-32 BY LOCKHEED AIRCRAFT COMPANY

LINDBERGH'S SIRIUS IS NOW ON DISPLAY AT THE  
 MUSEUM OF NATURAL HISTORY IN NEW YORK CITY

WILEY POST & WILL ROGERS' ORION (NR-12283)  
 WAS FITTED WITH SIRIUS WINGS AND FLOATS  
 AS SHOWN BELOW; 160 H.P. ENGINE WITH 3  
 BLADED CONSTANT SPEED PROP WAS CHANGED  
 FROM 500 H.P. WASP AND 2 BLADED ADJ. FEEL

WEIGHT (CLYDENE) 58:1820-110 HR  
 WAS INSTALLED ON SEAPLANE  
 VERSION OF SIRIUS NR-211