

SPAN — 27' 0 7/8"
 LENGTH — 19' 4 1/8"

WING
 V-STRUT

COLOR SCHEME:
BRITISH: MAIN OUTPUT WERE DOPED WITH AN OVERALL ALUMINUM FINISH. SOME WERE CAMOUFLAGED IN IRREGULAR PATCHES OF DARK GREEN AND KHAKI. UNDER SIDE IN NATURAL CLEARDOPED LINEN.
FRENCH: DITTO! SOME 9L'S WERE ALSO LEFT IN NATURAL LINEN FABRIC.
 COWLINGS, WHEN NOT PRINTED OVER BY UNITS, WERE LEFT NATURAL ALUMINUM.

SHELL CASE
 EJECTION TUBE

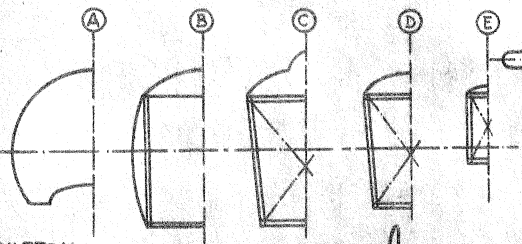
VARNISHED
 NATURAL
 SPRUCE

EARLY BATCH
 OF No. 17
 HAD HALF
 SPHERE
 SPINNER

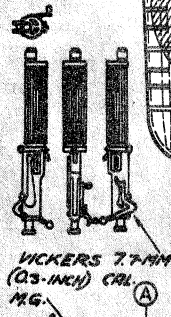
PLYWOOD SEAT
 ALERON CRANK

EYLET ON
 UPPER SIDE
 ONLY

ENGINE:
 Le RHONE, 110-HP



AILERON
 CRANK



VICKERS 7.7-MM
 (.33-INCH) CAL.
 M.G.

LACING AREA
 PAINTED BLUE

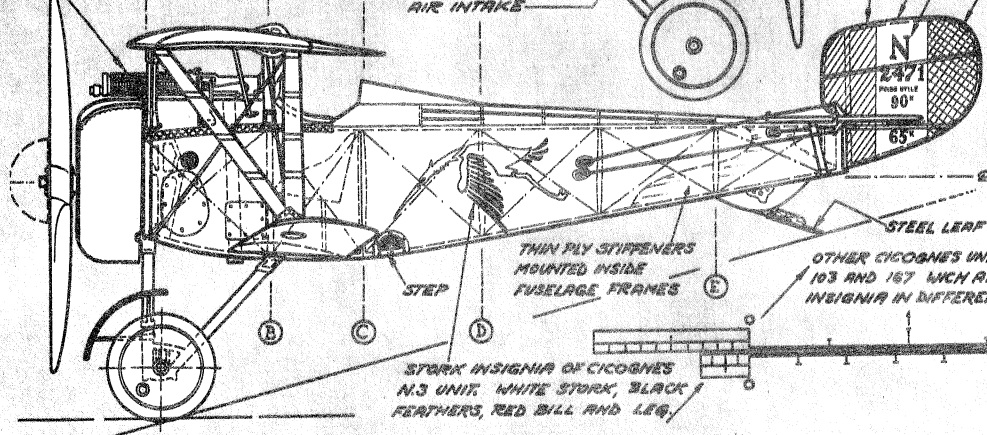
SERVICE PANEL

CARBURATOR
 AIR INTAKE

MUD GUARD
 (OPTIONAL)

BLACK SERIALS

RED WHITE BLUE



STEEL LEAF SPRING

THIN PLY STIFFENERS
 MOUNTED INSIDE
 FUSELAGE FRAMES

STEP

OTHER CICOGNE'S UNITS WERE NOS 26, 73, 103 AND 167 WHICH ALSO CARRIED STORK INSIGNIA IN DIFFERENT ATTITUDES.

STORK INSIGNIA OF CICOGNE'S
 N.3 UNIT. WHITE STORK, BLACK
 FEATHERS, RED BILL AND LEG.

BLUE TAPE

3-METER

10-FOOT

KARLSTROM: 1916 NIEUPORT 17C-1