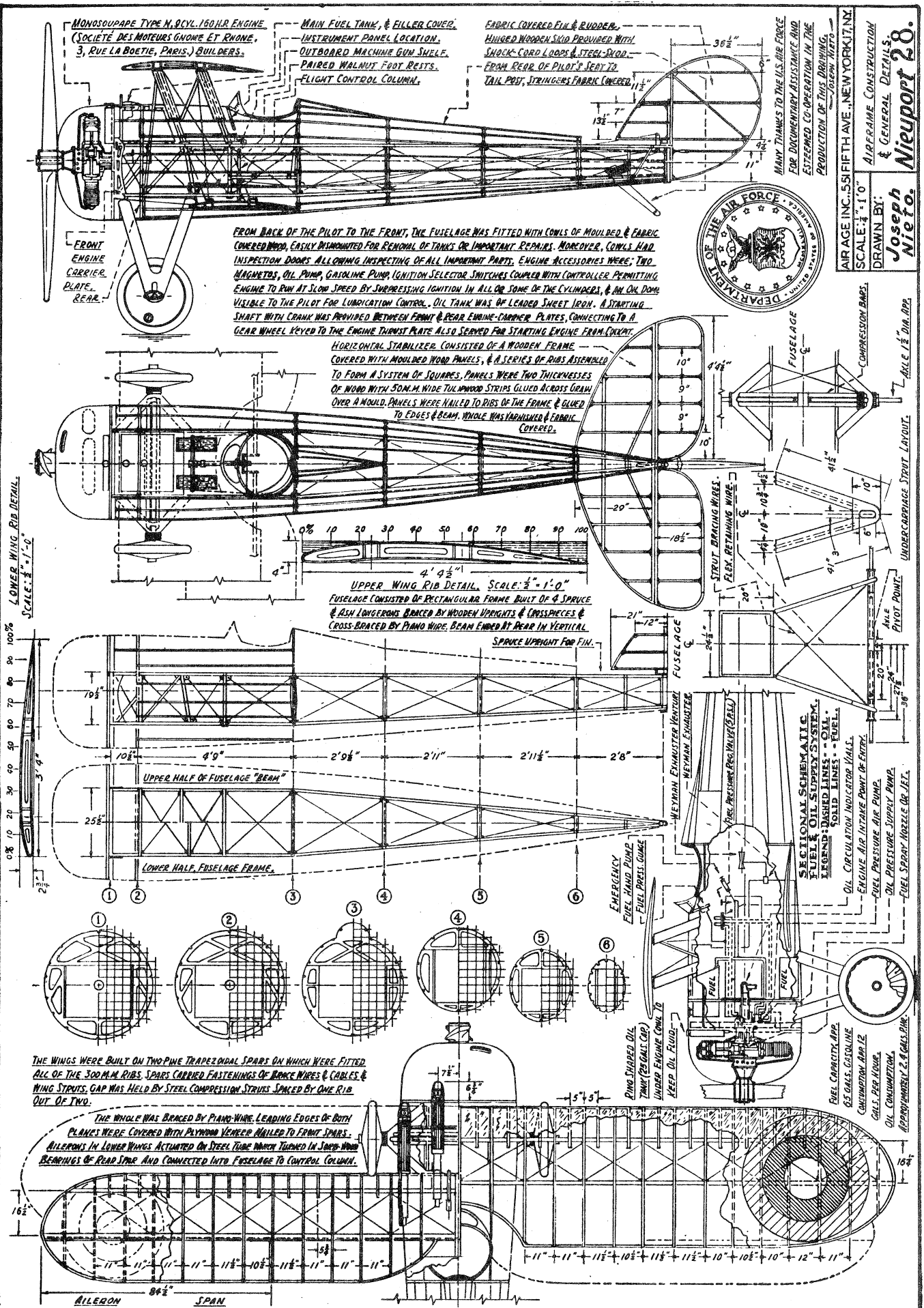


NOTE: THANKS TO THE U.S. AIR FORCE FOR DOCUMENTARY ASSISTANCE IN THE PRODUCTION OF THIS DRAWING. THE KINDNESS AND CO-OPERATIVE GOOD WILL OF CAPT. EDDIE RICKENBACHER IS VERY MUCH APPRECIATED. GENERAL OUTLINES WERE OBTAINED FROM TRACINGS ORIGINATING AT THE FRENCH NIEUPOINT FACTORY, J. NIET.

AMERICAN COCKADE INSIGNIA (RED OUTER RING, BLUE CENTER & WHITE DOT) WAS PAINTED ABOVE AND BELOW UPPER WING TIPS & ONLY BENEATH LOWER WING TIPS. COLOR SCHEME: PALE GREY FUSELAGE & WINGS, CLEAR DOPED, LOWER WING-WALKS, BLACK. MOST FRENCH NIEUPOINT 28'S WERE CAMOUFLAGED WITH PATCHES OF LIGHT GREEN & BUFF ON THE UPPER SURFACES AND CLEAR DOPED UNDERNEATH.

AIR AGE INC., 551 FIFTH AVE., NEW YORK, N.Y.
 SCALE: 1"=1'0"
 GENERAL ARRANGEMENT,
 CAPT. EDDIE V. RICKENBACHER,
 DRAWN BY:
Joseph Niefo.
Nieuport 28.



MONOSUPE TYPE N, CYL. 160 H.R. ENGINE
(SOCIÉTÉ DES MOTEURS Gnome ET Rhône,
3, RUE LA BOÉTIE, PARIS.) BUILDERS.

MAIN FUEL TANK, & FILLER COVER,
INSTRUMENT PANEL LOCATION,
OUTBOARD MACHINE GUN SHELF,
PAIRED WALNUT FOOT RESTS,
FLIGHT CONTROL COLUMN.

FABRIC COVERED FIN & RUDDER,
HUNG ON WOODEN SKID PROVIDED WITH
SHOCK-CORD LOOPS & STEEL SKID.
FROM REAR OF PILOT'S SEAT TO
TAIL POST, STRINGERS FABRIC COVERED.

FRONT
ENGINE
CARRIER
PLATE,
REAR.

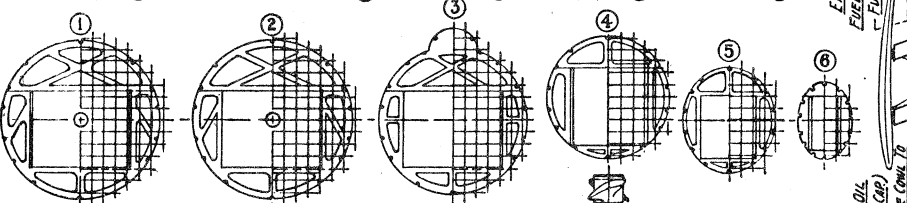
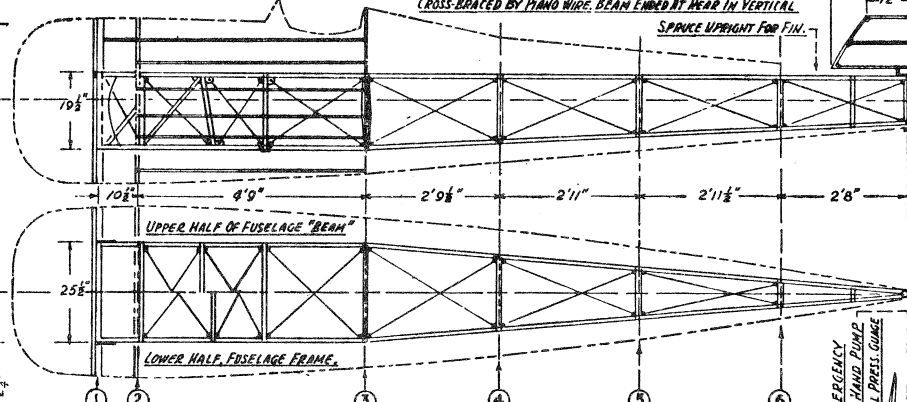
FROM BACK OF THE PILOT TO THE FRONT, THE FUSELAGE WAS FITTED WITH COWLS OF MOULDED & FABRIC COVERED WOOD, EASILY DISMOUNTED FOR REMOVAL OF TANKS OR IMPORTANT REPAIRS. MOREOVER, COWLS HAD INSPECTION DOORS ALLOWING INSPECTING OF ALL IMPORTANT PARTS. ENGINE ACCESSORIES WERE; TWO MAGNETOS, OIL PUMP, GASOLINE PUMP, IGNITION SELECTOR SWITCHES COUPLED WITH CONTROLLER, PERMITTING ENGINE TO RUN AT SLOW SPEED BY SUPPRESSING IGNITION IN ALL OR SOME OF THE CYLINDERS, & AN OIL DOME VISIBLE TO THE PILOT FOR LUBRICATION CONTROL. OIL TANK WAS OF LEADED SHEET IRON. A STARTING SHAFT WITH CRANK WAS PROVIDED BETWEEN FRONT & REAR ENGINE-CARRIER PLATES, CONNECTING TO A GEAR WHEEL KEYED TO THE ENGINE THRUST PLATE ALSO SERVED FOR STARTING ENGINE FROM COCKPIT.

HORIZONTAL STABILIZER, CONSISTED OF A WOODEN FRAME COVERED WITH MOULDED WOOD PANELS, & A SERIES OF RIBS ASSEMBLED TO FORM A SYSTEM OF SQUARES. PANELS WERE TWO THICKNESSES OF WOOD WITH 50 M.M. WIDE TULWOOD STRIPS GLUED ACROSS GRAIN OVER A MOULD. PANELS WERE NAILED TO RIBS OF THE FRAME & GLUED TO EDGES & BEAM. WHOLE WAS VARNISHED & FABRIC COVERED.

UPPER WING RIB DETAIL. SCALE: 1/2" = 1'-0"
FUSELAGE CONSISTED OF RECTANGULAR FRAME BUILT OF 4 SPRUCE & ASH LONGERONS BRACED BY WOODEN UPRIGHTS & CROSSPIECES & CROSS-BRACED BY PLANO WIRE. BEAM ENDED BY REAR IN VERTICAL SPRUCE UPRIGHT FOR FIN.

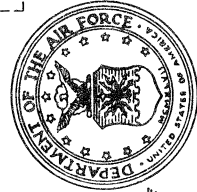
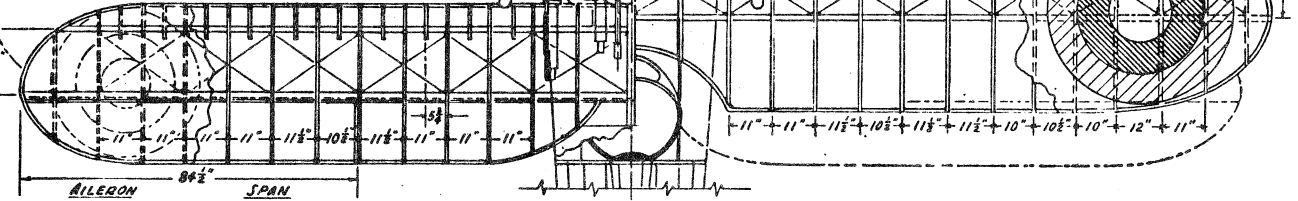
LOWER WING RIB DETAIL
SCALE: 1/2" = 1'-0"

100%
90%
80%
70%
60%
50%
40%
30%
20%
10%
0%



THE WINGS WERE BUILT ON TWO PINE TRAPEZOIDAL SPARS ON WHICH WERE FITTED ALL OF THE 300 M.M. RIBS. SPARS CARRIED FASTENINGS OF BRACE WIRES & CABLES & WING STRUTS. GAP WAS HELD BY STEEL COMPRESSION STRIPS SPACED BY ONE RIB OUT OF TWO.

THE WHOLE WAS BRACED BY PLANO WIRE. LEADING EDGES OF BOTH PLANES WERE COVERED WITH PLYWOOD VENEER NAILED TO FRONT SPARS. ALLERONS IN LOWER WINGS ACTUATED ON STEEL TUBE WHICH TURNED IN JOINT WOOD BEARINGS OF REAR SPAR AND CONNECTED INTO FUSELAGE TO CONTROL COLUMN.



MANY THANKS TO THE U.S. AIR FORCE
FOR DOCUMENTARY ASSISTANCE AND
ESTEEMED CO-OPERATION IN THE
PRODUCTION OF THIS DRAWING.

AIR AGE INC., 55 FIFTH AVE., NEW YORK 17, N.Y.
SCALE: 1/2" = 1'-0"
AIRFRAME CONSTRUCTION
& GENERAL DETAILS
Joseph Nieto
Nieuport 28.

SECTIONAL SCHEMATIC
FUEL & OIL SUPPLY SYSTEM.
LEGEND-DASHED LINES - OIL.
SOLID LINES - FUEL.

