

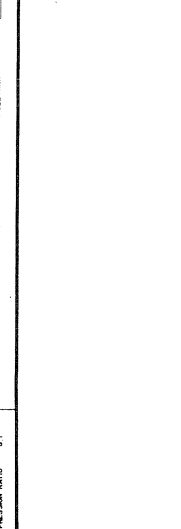
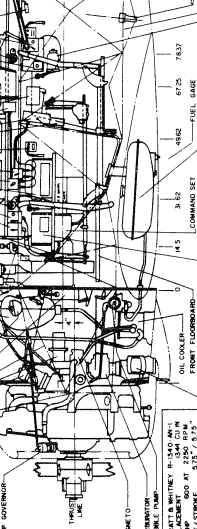
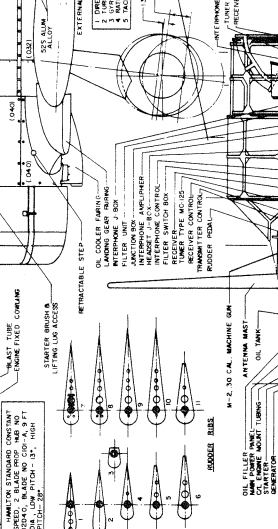
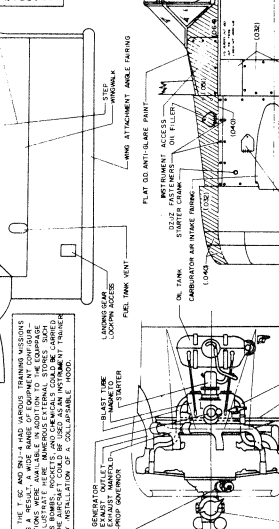
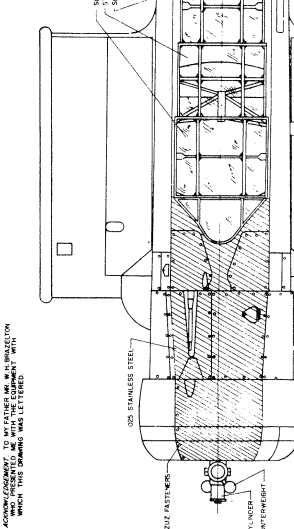
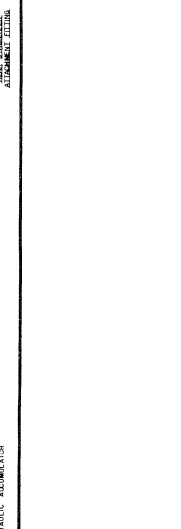
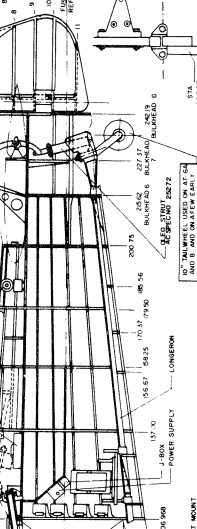
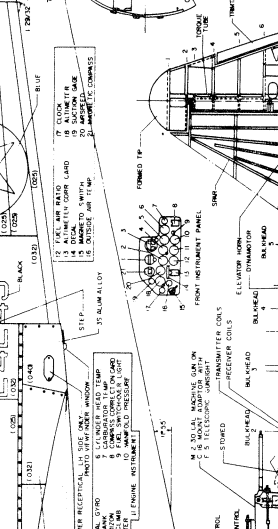
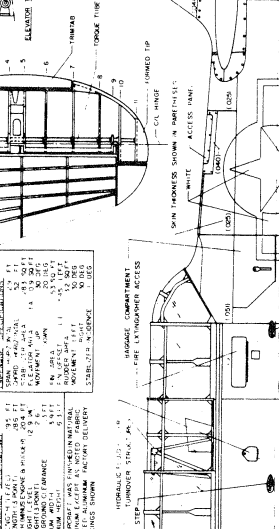
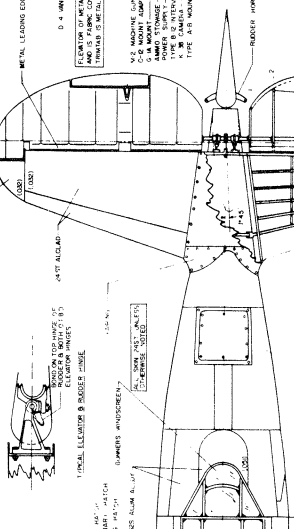
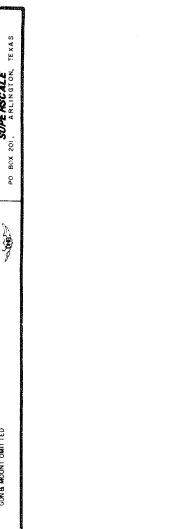
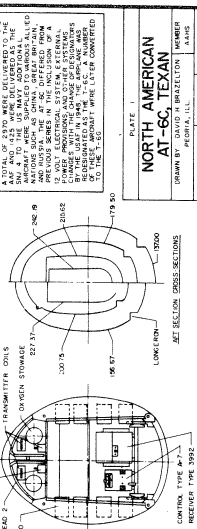
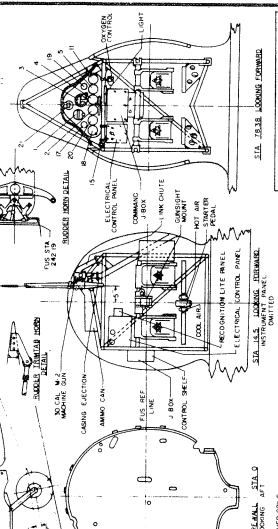
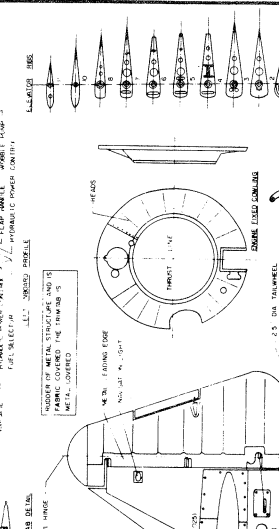
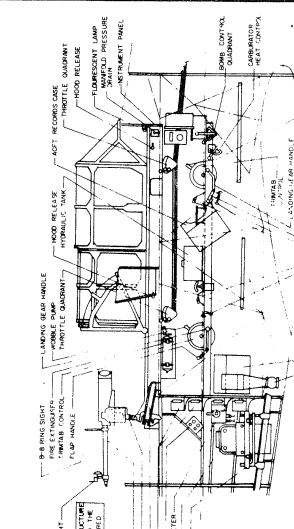
APPROXIMATELY 10% OF THE WEIGHT OF THE AIRCRAFT IS PRESUMED TO BE WITH THE COMPANY, WHICH THIS DRAWING WAS LETTERED.

THE AT-66 AND THE VARIOUS TRAINING VERSIONS ARE AVAILABLE IN ADDITION TO THE COMPASS, INSTRUMENT, AND OBSERVER VERSIONS. THE INSTRUMENT AND OBSERVER VERSIONS ARE AVAILABLE BY INSTALLATION OF A COLLAPSIBLE HOOD.

RETRACTABLE STEP
 OIL COOLER FAN
 FILTER MAT
 INTERPHONE CONTROL
 INTERPHONE CONTROL
 RECEIVER CONTROL
 PRODUCE SIGNAL

RETRACTABLE STEP
 OIL COOLER FAN
 FILTER MAT
 INTERPHONE CONTROL
 INTERPHONE CONTROL
 RECEIVER CONTROL
 PRODUCE SIGNAL

RETRACTABLE STEP
 OIL COOLER FAN
 FILTER MAT
 INTERPHONE CONTROL
 INTERPHONE CONTROL
 RECEIVER CONTROL
 PRODUCE SIGNAL



SCALE 3/4" = 1'
 NORTH AMERICAN
 AT-66, TEXAN
 DRAWN BY PERVA, L.L.
 CHECKED BY JAMES
 APPROVED BY JAMES
 SUPERVISOR
 PD. BY JAMES

SECTION 20000
 LOW-TEMPERATURE
 REVISION 1000
 REVISION 2000
 REVISION 3000
 REVISION 4000
 REVISION 5000
 REVISION 6000
 REVISION 7000
 REVISION 8000
 REVISION 9000
 REVISION 10000

SECTION 20000
 LOW-TEMPERATURE
 REVISION 1000
 REVISION 2000
 REVISION 3000
 REVISION 4000
 REVISION 5000
 REVISION 6000
 REVISION 7000
 REVISION 8000
 REVISION 9000
 REVISION 10000

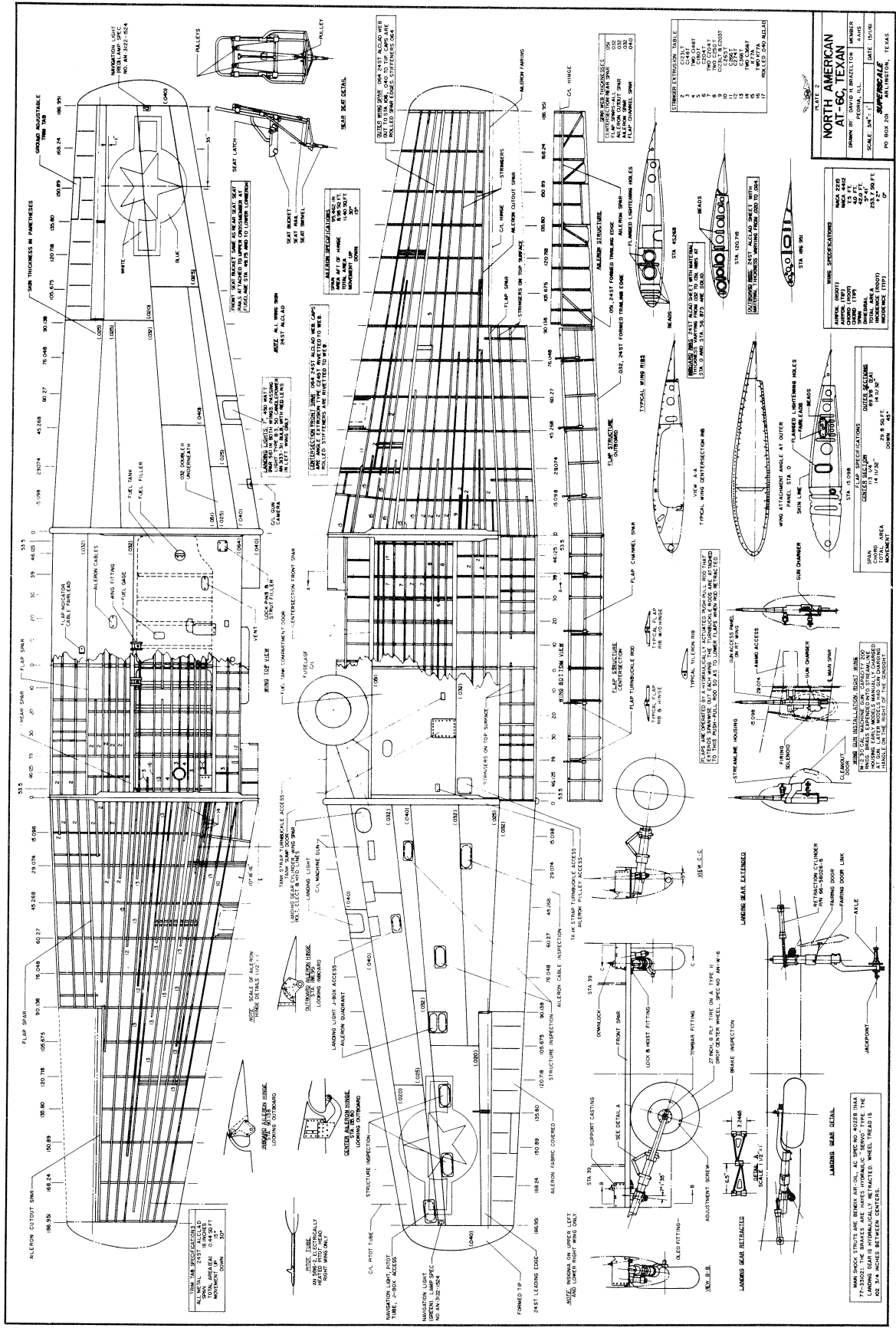
SECTION 20000
 LOW-TEMPERATURE
 REVISION 1000
 REVISION 2000
 REVISION 3000
 REVISION 4000
 REVISION 5000
 REVISION 6000
 REVISION 7000
 REVISION 8000
 REVISION 9000
 REVISION 10000

SECTION 20000
 LOW-TEMPERATURE
 REVISION 1000
 REVISION 2000
 REVISION 3000
 REVISION 4000
 REVISION 5000
 REVISION 6000
 REVISION 7000
 REVISION 8000
 REVISION 9000
 REVISION 10000

SECTION 20000
 LOW-TEMPERATURE
 REVISION 1000
 REVISION 2000
 REVISION 3000
 REVISION 4000
 REVISION 5000
 REVISION 6000
 REVISION 7000
 REVISION 8000
 REVISION 9000
 REVISION 10000

SECTION 20000
 LOW-TEMPERATURE
 REVISION 1000
 REVISION 2000
 REVISION 3000
 REVISION 4000
 REVISION 5000
 REVISION 6000
 REVISION 7000
 REVISION 8000
 REVISION 9000
 REVISION 10000

SECTION 20000
 LOW-TEMPERATURE
 REVISION 1000
 REVISION 2000
 REVISION 3000
 REVISION 4000
 REVISION 5000
 REVISION 6000
 REVISION 7000
 REVISION 8000
 REVISION 9000
 REVISION 10000



NORTH AMERICAN
AT-6C, TEXAN

SCALE: 1/4" = 1'-0"

DATE: 7/1/44

REVISED: 7/1/44

PO BOX 200 AUSTIN, TEXAS

WING SPECIFICATIONS

WING AREA (TOTAL) 140.00 SQ. FT.

WING AREA (PLAN) 140.00 SQ. FT.

WING AREA (FRONT) 140.00 SQ. FT.

WING AREA (REAR) 140.00 SQ. FT.

WING AREA (TOTAL) 140.00 SQ. FT.

WING AREA (PLAN) 140.00 SQ. FT.

WING AREA (FRONT) 140.00 SQ. FT.

WING AREA (REAR) 140.00 SQ. FT.

FLAP SPECIFICATIONS

FLAP AREA (TOTAL) 140.00 SQ. FT.

FLAP AREA (PLAN) 140.00 SQ. FT.

FLAP AREA (FRONT) 140.00 SQ. FT.

FLAP AREA (REAR) 140.00 SQ. FT.

FLAP AREA (TOTAL) 140.00 SQ. FT.

FLAP AREA (PLAN) 140.00 SQ. FT.

FLAP AREA (FRONT) 140.00 SQ. FT.

FLAP AREA (REAR) 140.00 SQ. FT.

LANDING GEAR SPECIFICATIONS

LANDING GEAR AREA (TOTAL) 140.00 SQ. FT.

LANDING GEAR AREA (PLAN) 140.00 SQ. FT.

LANDING GEAR AREA (FRONT) 140.00 SQ. FT.

LANDING GEAR AREA (REAR) 140.00 SQ. FT.

LANDING GEAR AREA (TOTAL) 140.00 SQ. FT.

LANDING GEAR AREA (PLAN) 140.00 SQ. FT.

LANDING GEAR AREA (FRONT) 140.00 SQ. FT.

LANDING GEAR AREA (REAR) 140.00 SQ. FT.

FLAP ATTACHMENT ANGLE AT OUTER

FLAP ATTACHMENT ANGLE AT OUTER

FLAP ATTACHMENT ANGLE AT OUTER

FLAP ATTACHMENT ANGLE AT OUTER

FLAP ATTACHMENT ANGLE AT OUTER

FLAP ATTACHMENT ANGLE AT OUTER

FLAP ATTACHMENT ANGLE AT OUTER

FLAP ATTACHMENT ANGLE AT OUTER

LANDING GEAR DETAIL

LANDING GEAR DETAIL

LANDING GEAR DETAIL

LANDING GEAR DETAIL

LANDING GEAR DETAIL

LANDING GEAR DETAIL

LANDING GEAR DETAIL

LANDING GEAR DETAIL

LANDING GEAR DETAIL

WING SHOCK STRUTS ARE BENEATH MAIN, A.C. SPEC NO. 40225 (SEE DRAWING FOR DETAILS)

WING SHOCK STRUTS ARE BENEATH MAIN, A.C. SPEC NO. 40225 (SEE DRAWING FOR DETAILS)

WING SHOCK STRUTS ARE BENEATH MAIN, A.C. SPEC NO. 40225 (SEE DRAWING FOR DETAILS)

WING SHOCK STRUTS ARE BENEATH MAIN, A.C. SPEC NO. 40225 (SEE DRAWING FOR DETAILS)