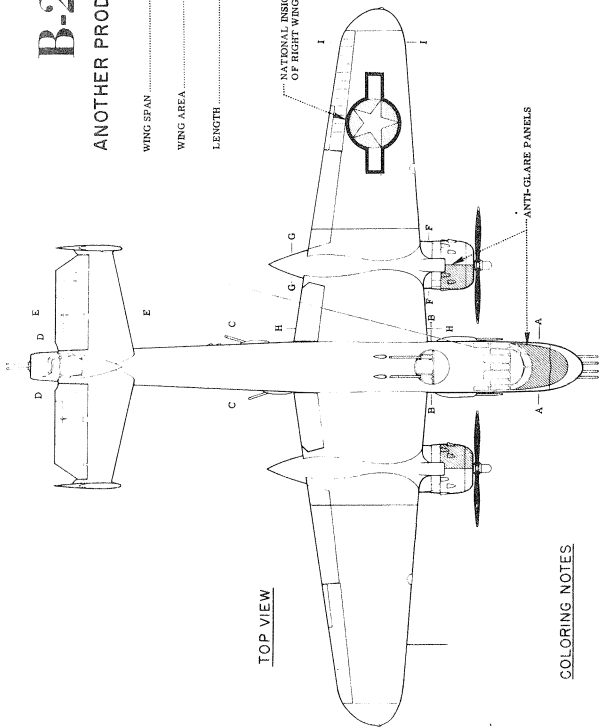


B-25 Mitchell

ANOTHER PRODUCT OF NORTH AMERICAN AVIATION, INC.

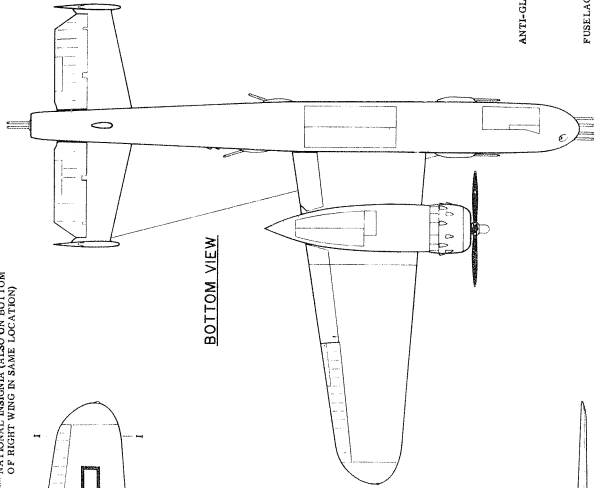
WING SPAN..... 67'-6 3/4" HEIGHT..... 19'-4 1/4"
 WING AREA..... 685.6 SQ FT GROSS WEIGHT (WITH FUEL)..... 34455 LBS
 LENGTH..... 53'-5 3/4" POWER PLANT..... WRIGHT CYCLONE

TOP VIEW



NATIONAL INSIGNIA (ALSO ON BOTTOM OF RIGHT WING IN SAME LOCATION)

BOTTOM VIEW



COLORING NOTES

- ENTIRE AIRPLANE..... OLIVE DRAB ON TOP
 NEUTRAL GRAY ON BOTTOM
- ALL LETTERING AND MARKINGS
 (UNLESS OTHERWISE INDICATED)..... BLACK
- NATIONAL INSIGNIAS..... RED, WHITE, AND BLUE
- ANTI-GLARE PANELS..... FLAT BLACK
- PROPELLERS..... BLACK WITH YELLOW TIPS

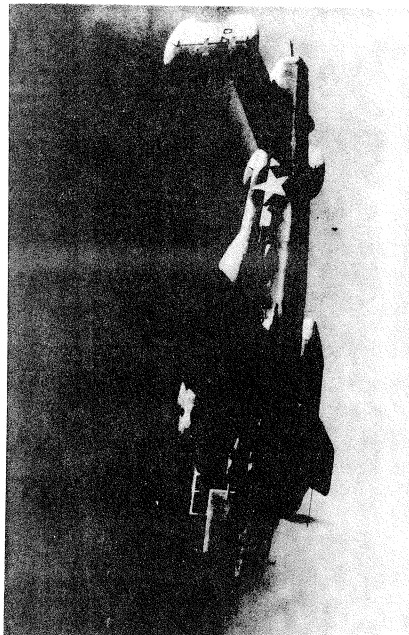
U.S. AIR FORCE B-25 MITCHELL BOMBER

NORTH AMERICAN AVIATION, INC.

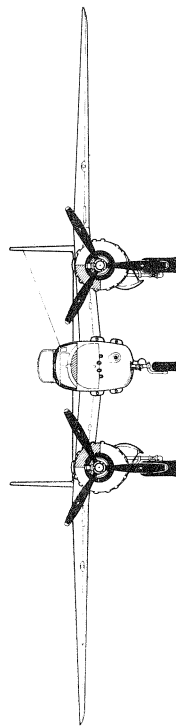
THE B-25 MITCHELL, DISTINGUISHABLE BY ITS "GULL" TYPE WING AND TWIN-TAILED EMPENNAGE, WAS DESIGNED AND CLASSIFIED AS A MEDIUM BOMBER TYPE AIRPLANE. THE B-25 IS A MID-WING, ALL-METAL, LAND MONOPLANE POWERED BY TWO 1700-HORSEPOWER WRIGHT CYCLONES, RADIAL, AIR-COOLED ENGINES MOUNTED IN WING NACELLES, WITH A CREW OF FIVE - PILOT, COPILOT, BOMBARDIER (NAVIGATOR), RADIO OPERATOR, AND GUNNER - IT CRUISED AT AN AVERAGE VELOCITY 280 MILES PER HOUR AND COULD CARRY A BOMB LOAD OF 7000 POUNDS.

BRETTING WITH MACHINE GUNS AND 15 MILLIMETER CANNONS, THE B-25 MITCHELL WAS THE WORLD'S MOST HEAVILY ARMED AIRPLANE DURING WORLD WAR II, WITH FIFTEEN MORTAR BOMBERS FOR THE BOMBARDIER, AND A VERSATILE AIRPLANE WAS USED FOR HIGH- AND LOW-LEVEL BOMBING, STRAFING, SUBMARINE PATROL, AND AS A FIGHTER TO BATTER AND RUDDLE SHIPPING, LAND TARGETS AND ENEMY TROOPS ON ALL WAR FRONTS. IT WAS ALSO USED FOR OTHER PURPOSES, SUCH AS PHOTO RECONNAISSANCE, PERSONNEL TRANSPORTATION AND AS A TRAINER.

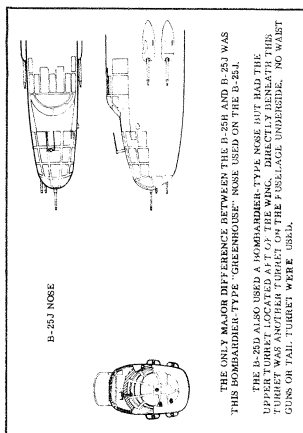
ONE OF THE BETTER KNOWN FEATS IS JIMMY DOOLITTLE'S HISTORIC BOMBING OF TOKYO. THE B-25 WAS ALSO THE FIRST U.S. AIRPLANE TO BE LAUNCHED BY CATAPULT ON A BOMBING RAID ON THE EUROPEAN THEATER OF WAR, AND THE FIRST ALLIED AIRPLANE TO MAKE A BOMBING RAID ON THE EUROPEAN THEATER OF WAR. THE B-25 BOMBER, IT OFTEN MADE HEAVY BOMBING RAIDS OF OVER 2000-MILE RADII. LIKE OTHER WORLD WAR II NORTH AMERICAN AIRPLANES, MODIFIED MITCHELLS ARE STILL USED BY THE AIR FORCE AS TWIN-ENGINE TRAINERS.



FRONT VIEW

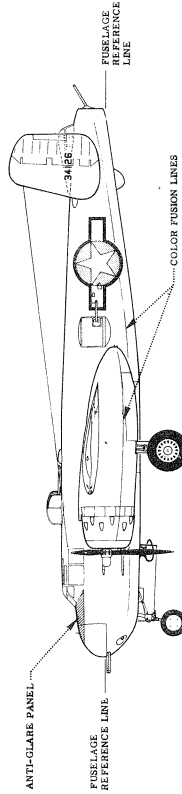


B-25J NOSE



THE ONLY MAJOR DIFFERENCE BETWEEN THE B-25H AND B-25J WAS THIS BOMBARDIER-TYPE GREENHOUSE NOSE USED ON THE B-25J. THE B-25D ALSO USED A BOMBARDIER-TYPE NOSE BUT HAD THE TURRET WAS ANOTHER TURRET ON THE FUSELAGE UNDERNEATH. NO WAIST GUNS ON TAIL. TURRET WERE USED.

SIDE VIEW

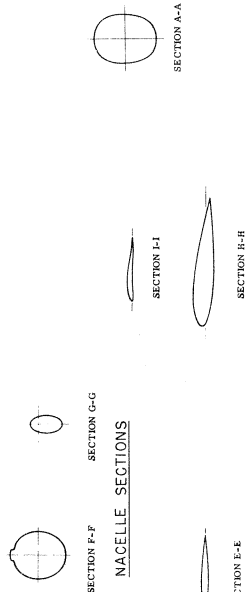


ANTI-GLARE PANEL

FUSELAGE REFERENCE LINE

FUSELAGE REFERENCE LINE

COLOR FUSION LINES



FUSELAGE CROSS SECTIONS

WING SECTIONS

0 1 2 3 4 5 6 7 8 9 10
 SCALE IN FEET

STABILIZER SECTION

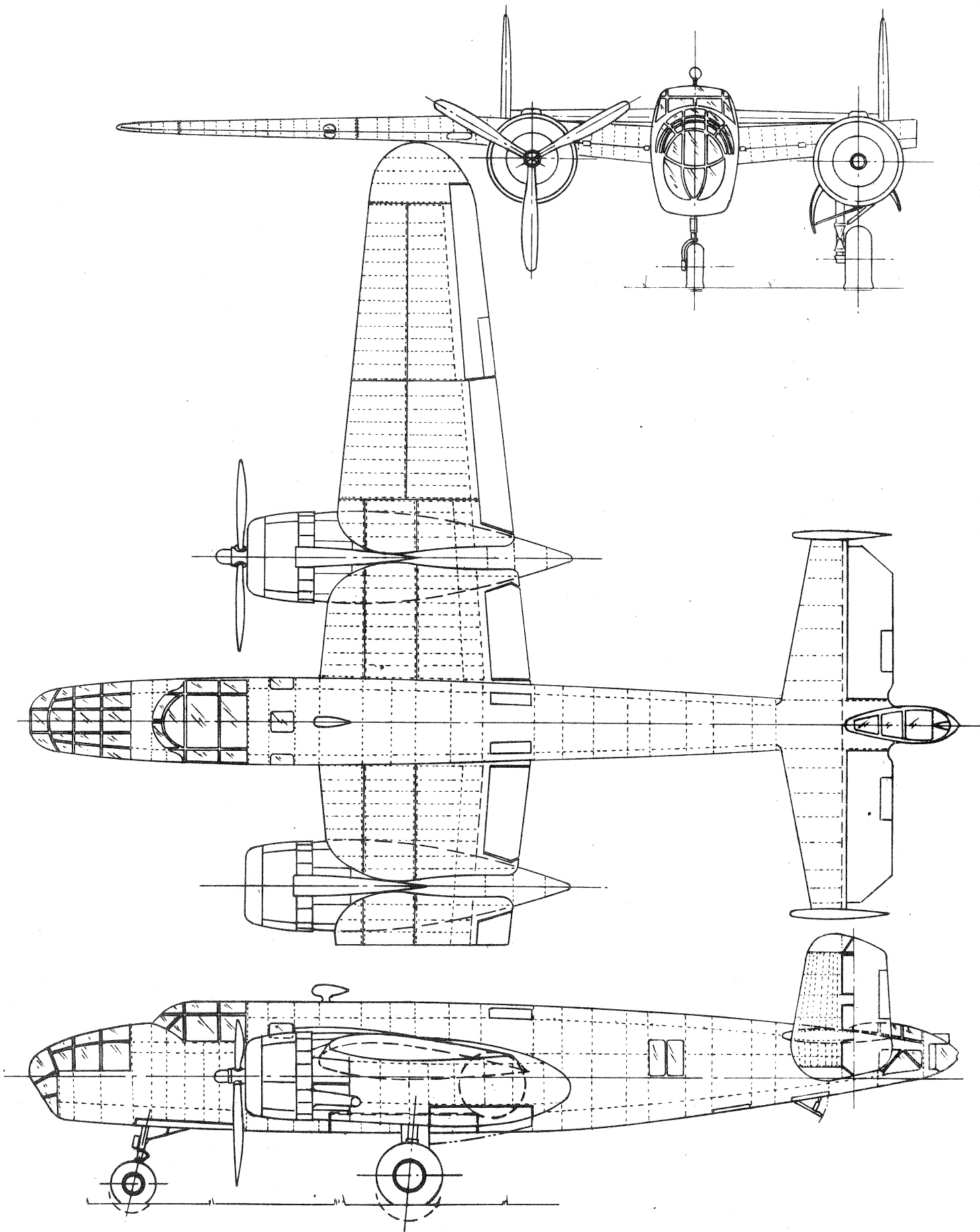
0 1 2 3 4 5 6 7 8 9 10
 SCALE IN FEET

B-25 Mitchell

U.S. AIR FORCE
 MEDIUM BOMBER
 DESIGNED AND BUILT BY
 NORTH AMERICAN AVIATION, INC.

SCALE: NOTED DATE: NOVEMBER 1944
 PREPARED BY NORTH AMERICAN AVIATION, INC.

NORTH AMERICAN HAS BUILT MORE AIRPLANES THAN ANY OTHER COMPANY IN THE WORLD



NORTH AMERICAN B-25