

- 1 K14 BURNOUT
- 2 OXYGEN REGULATOR
- 3 RESEAT ADAPTOR
- 4 OXYGEN CONTROL
- 5 TURBOHEAT EXHAUST
- 6 TURBOHEAT CONTROL
- 7 RETROFLARE HOOD
- 8 MIPCASE
- 9 FLUORESCENT LIGHT
- 10 SEAT BELT
- 11 OXYGEN CONTROL
- 12 OXYGEN CONTROL
- 13 WEARREST
- 14 ARMORPLATE

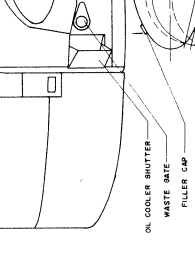
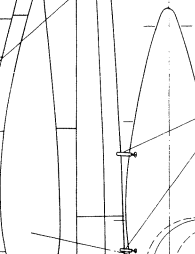
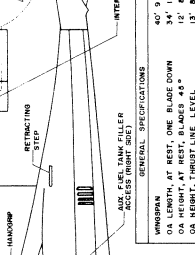
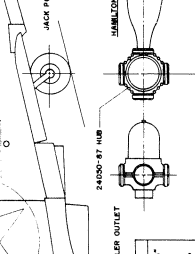
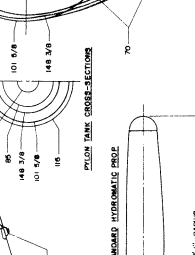
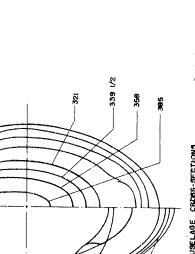
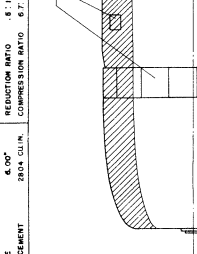
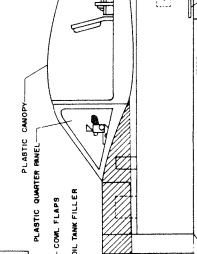
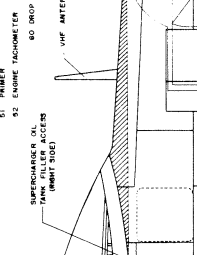
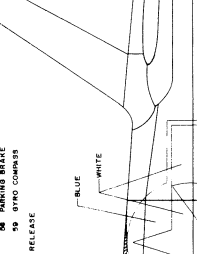
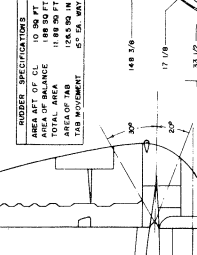
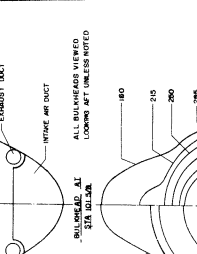
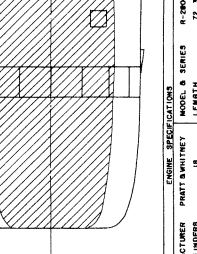
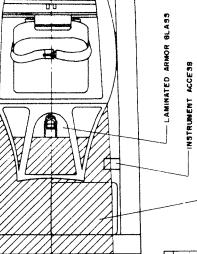
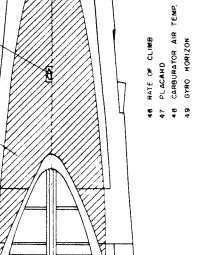
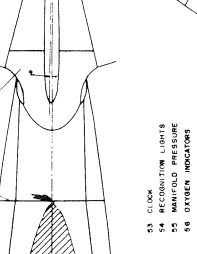
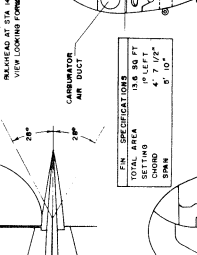
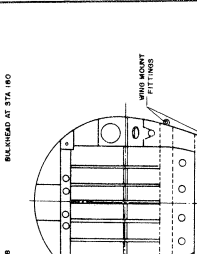
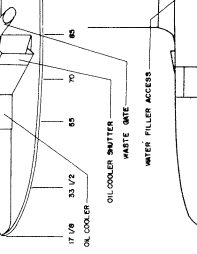
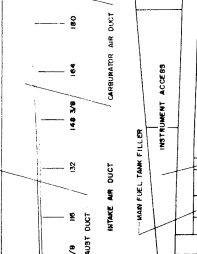
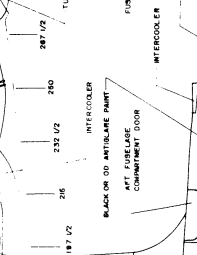
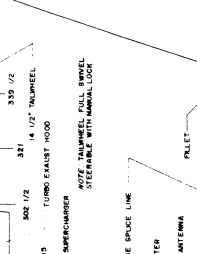
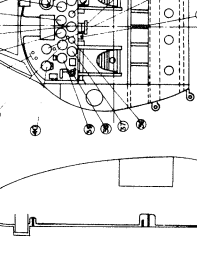
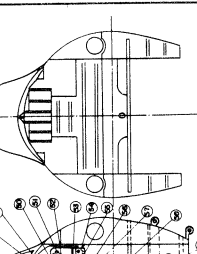
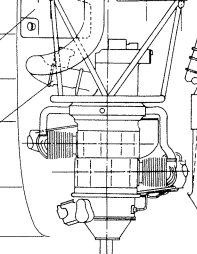
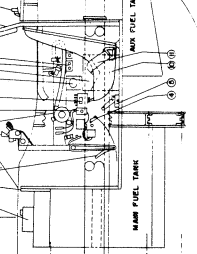
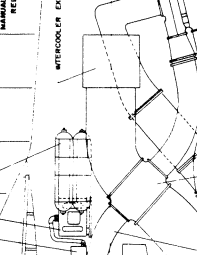
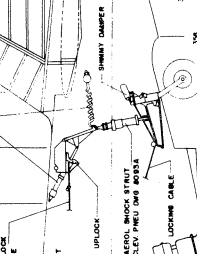
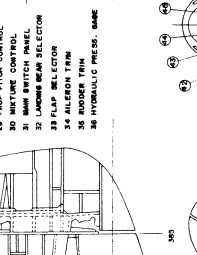
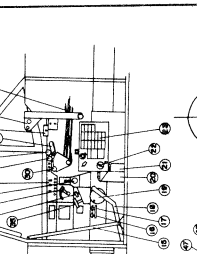
- 15 SEAT SUPPORT RAIL
- 16 SEAT ARMING HANDLE
- 17 TURBO HEAT CONTROL
- 18 MANUAL HYDRAULIC PUMP
- 19 CYLINDER HEAD TEMP.
- 20 ALTIMETER
- 21 OIL TANK
- 22 FUEL FILLER
- 23 BOOST PUMP INJECTOR
- 24 OIL CONTROL PUMPS
- 25 OIL CONTROL
- 26 WASTE WATER CONTROL
- 27 THROTTLE CONTROL
- 28 PROOF PITCH CONTROL
- 29 METERING CONTROL
- 30 METERING CONTROL
- 31 LAUNCH BEAM SELECTOR
- 32 FLAP SELECTOR
- 33 ALLELON TRIM
- 34 RUDDER TRIM
- 35 HYDRAULIC PRESS. GAUGE

- 36 FUEL TANK
- 37 TURBO HEAT CONTROL
- 38 TURBO HEAT CONTROL
- 39 CYLINDER HEAD TEMP.
- 40 ALTIMETER
- 41 OIL TANK
- 42 FUEL FILLER
- 43 BOOST PUMP INJECTOR
- 44 METERING CONTROL
- 45 TURBO HEAT CONTROL

- 46 RATE OF CLIMB
- 47 CARBONATOR AIR TEMP.
- 48 OXYGEN INDICATORS
- 49 VELOCITY GAGE
- 50 PARKING BRAKE
- 51 OIL PRESSURE
- 52 ENGINE TACHOMETER
- 53 OIL TANK RELEASE
- 54 CLIMB
- 55 MANIFOLD PRESSURE
- 56 OXYGEN INDICATORS
- 57 WATER PRESSURE
- 58 PARKING BRAKE
- 59 OIL PRESSURE
- 60 OIL TANK RELEASE

- 61 OIL TANK
- 62 OIL TANK
- 63 OIL TANK
- 64 OIL TANK
- 65 OIL TANK
- 66 OIL TANK
- 67 OIL TANK
- 68 OIL TANK
- 69 OIL TANK
- 70 OIL TANK

- 71 OIL TANK
- 72 OIL TANK
- 73 OIL TANK
- 74 OIL TANK
- 75 OIL TANK
- 76 OIL TANK
- 77 OIL TANK
- 78 OIL TANK
- 79 OIL TANK
- 80 OIL TANK



**ENGINE SPECIFICATIONS**

MANUFACTURER	PRATT WHITNEY
MODEL & SERIES	R-2800-21
TYPE	STAR
BORE	5.75"
STROKE	4.00"
DISPLACEMENT	2804 CUB. IN.
REDUCTION RATIO	16.1:1
COMPRESSION RATIO	8.7:1

**ENGINE SPECIFICATIONS**

TOTAL AREA	18.8 SQ. FT.
CHORD	4' 7 1/2"
CHORD	9' 10"
AREA AFT OF CL	10.89 SQ. FT.
AREA OF NOZ	11.88 SQ. FT.
TOTAL AREA	18.8 SQ. FT.
AREA OF NOZ	11.88 SQ. FT.
AREA OF NOZ	11.88 SQ. FT.
AREA OF NOZ	11.88 SQ. FT.

**ENGINE SPECIFICATIONS**

48 RATE OF CLIMB	53
49 CARBONATOR AIR TEMP.	55
50 VELOCITY GAGE	56
51 PARKING BRAKE	57
52 ENGINE TACHOMETER	58
53 OIL TANK RELEASE	59
54 CLIMB	60
55 MANIFOLD PRESSURE	61
56 OXYGEN INDICATORS	62
57 WATER PRESSURE	63
58 PARKING BRAKE	64
59 OIL PRESSURE	65
60 OIL TANK RELEASE	66

**ENGINE SPECIFICATIONS**

WINDUP	40" x 50"
ON REST, AT REST, ONE BLADE DOWN	12" x 12"
ON REST, AT REST, TWO BLADES DOWN	13" x 14"
ON REST, THIRST LINE LEVEL	13" x 14"
GROUND CLEARANCE, THIRST LINE LEVEL	4" x 6"
TREAD OF MAIN WHEELS	18" x 5"
GROSS WEIGHT, NORMAL	12771 LB.
EMPTY WEIGHT	2000 LB.
WING LOADING, NORMAL	42.5 LB./SQ. FT.
WING LOADING, MAXIMUM	53.1 LB./SQ. FT.
POWER LOADING, NORMAL	808.5 WT.

REPUBLIC P-47D-25RE  
 DRAWN BY: [Name]  
 DATE: [Date]  
 SCALE: [Scale]  
 SHEET NO. [Number]  
 OF [Total]  
 SUPERSCALE  
 DEPT. OF AERONAUTICS, WASHINGTON, D.C.

