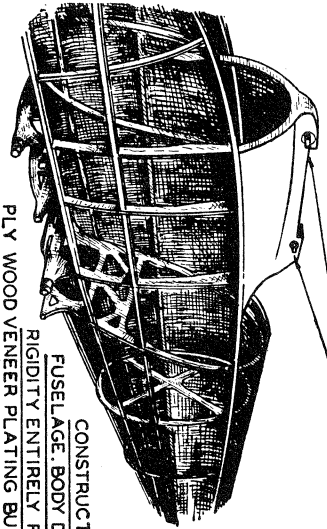


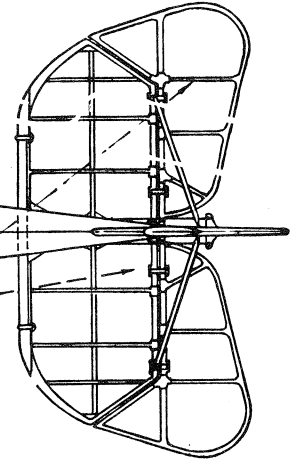


VIEW OF CENTER SECTION RIDGE AND RADIATOR INSTALLATION.

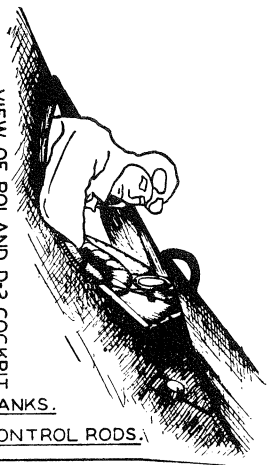
WING ATTACHMENT FITTINGS.



CONSTRUCTION OF FUSELAGE. BODY DERIVED ENTIRELY FROM SIX PLY WOOD VENEER PLATING BUILT IN HALVES AND JOINED AT TOP AND BOTTOM AND COVERED WITH DOPED FABRIC. TOTAL THICKNESS 13/16 INCH.



VIEW OF ROLL AND D-2 COCKPIT



EXPANSION RESERVOIR. WING TANK.

AILERON CRANKS. AILERON CONTROL RODS.

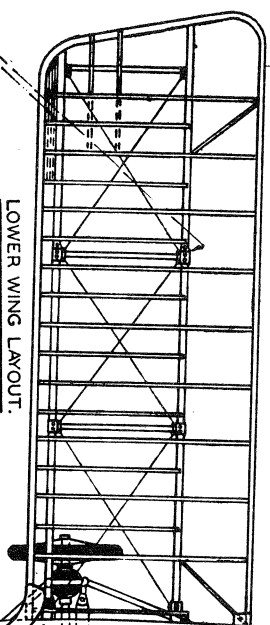
STABILIZER & VERTICAL FIN BUILT OF 3 PLY WOOD. ELEVATORS & RUDDER OF STEEL TUBING. REAR VIEW MIRROR. MAINPLANE AFT ATTACHMENT "Q.D." FITTINGS. RADIATOR CORE INSTALLATION. REAR GUNSIGHT FRAME. SEAT. LANDING GEAR SHOCK CORD. SPREADER BARS ENCLOSED IN STREAMLINE CASING. BOTH WINGS SWEEP BACK 1 1/2 DEG. NO STAG. NO DIHED. SPRUCE MAIN SPARS. STEEL TUBING COMPRESSION MEMBERS.

COOLANT TEMP. GAGE.

STEEL TUBE STRUTS ENCASED IN WOOD STREAMLINERS.

TWIN SPANDAUF M.GUNS.

FORWARD GUNSIGHT FRAME.

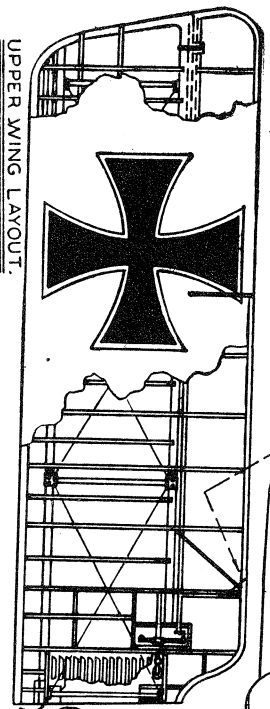


LOWER WING LAYOUT. FABRIC STRIPS ALTERNATING OVER & UNDER RIBS. INTERPLANE STRUT ATTACHMENTS. 9 FT. 8 IN. DIA. "AXIAL" LAMINATED WOOD PROPELLER. PLYWOOD ANGLE BRACING. ENGINE APERTURE OUTLINE WITH COWLING OFF.

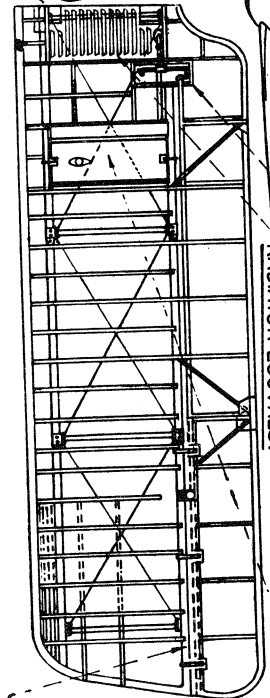
SPRUCE LEADING & TR. EDGES.

ASH CAP STRIPS. TULIPWOOD PACKING STRIPS. GRAY POPLAR WEB.

GRAVITY FEED AUXILIARY FUEL TANK. NEUPORT TYPE AILERON CRANKS. RADIATOR LOUVRES.

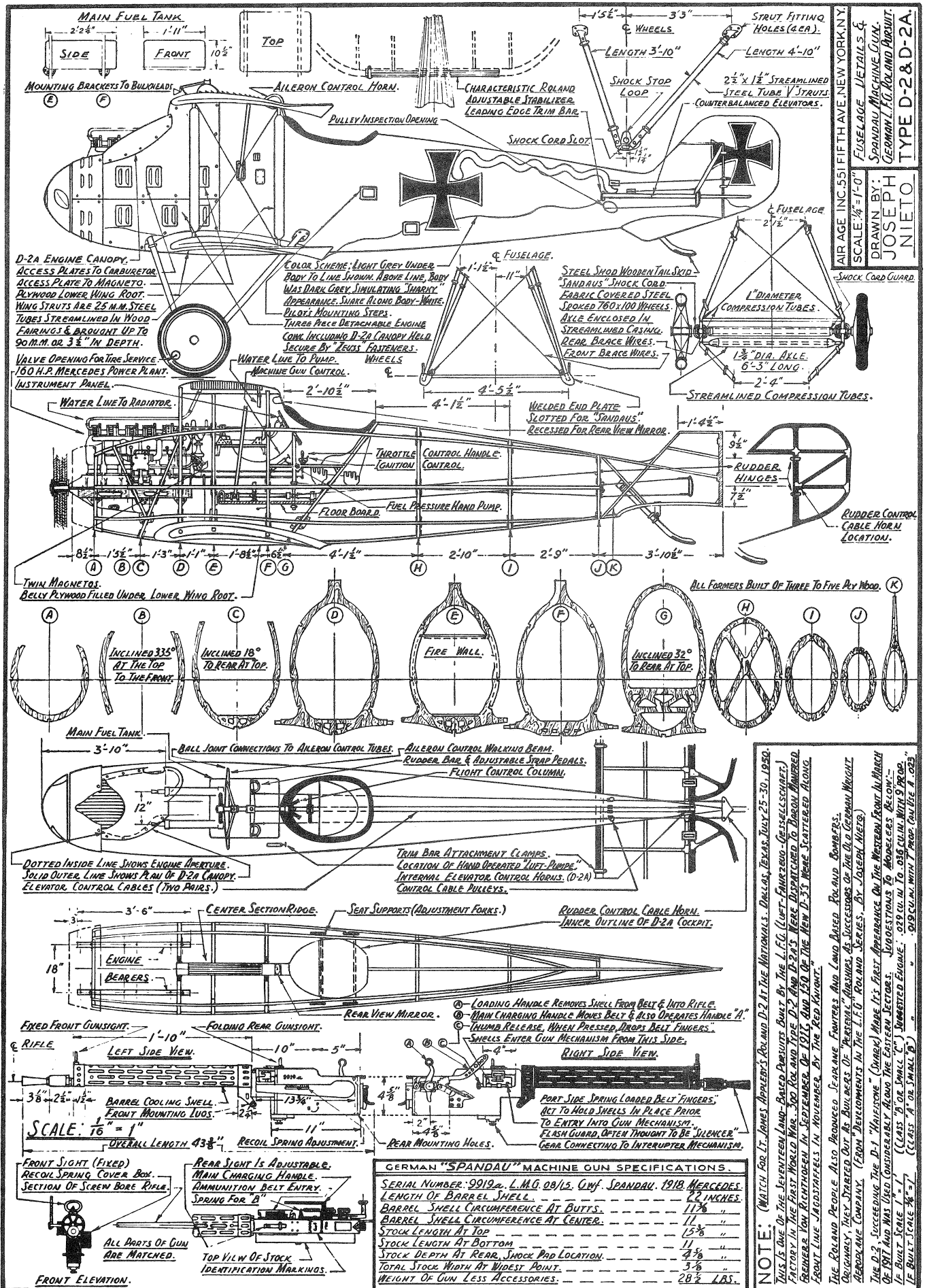


UPPER WING LAYOUT.



AILERON HINGES COVERED BY VENEER FABRIC.

AIR AGE INC. 51 FIFTH AVE. NEW YORK, N.Y.
 SCALE: 1/10" GENERAL ARRANGEMENTS.
 DATE: 4-10-30
 DRAWN BY: GEMAN L.F.G. ROLAND
 PURSUIT OF 1917.
Joseph P. Kelly
TYPE D-2.



AIR AGE INC. 551 FIFTH AVE. NEW YORK, N.Y.
 SCALE: 1/16" = 1'-0"
 SPANDAU MACHINE GUN
 DRAWN BY:
 JOSEPH NIETO
 GERMAN L.F.G. ROLAND PERFORMER
 TYPE D-2 & D-2A