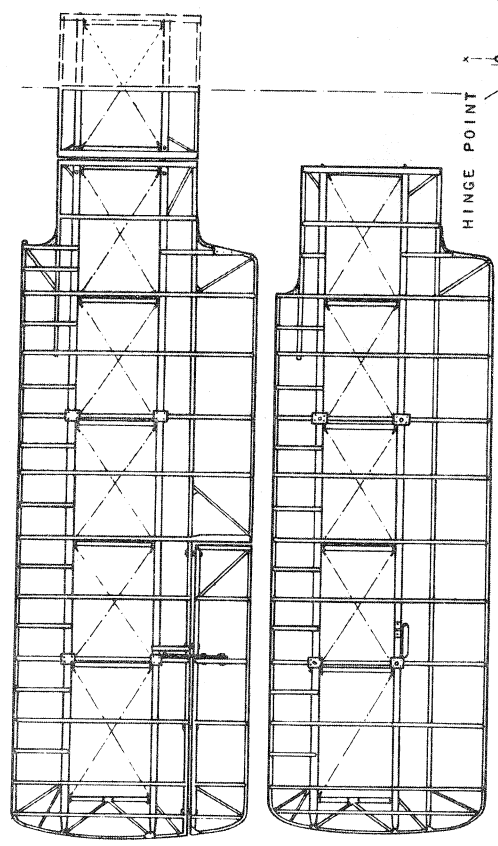
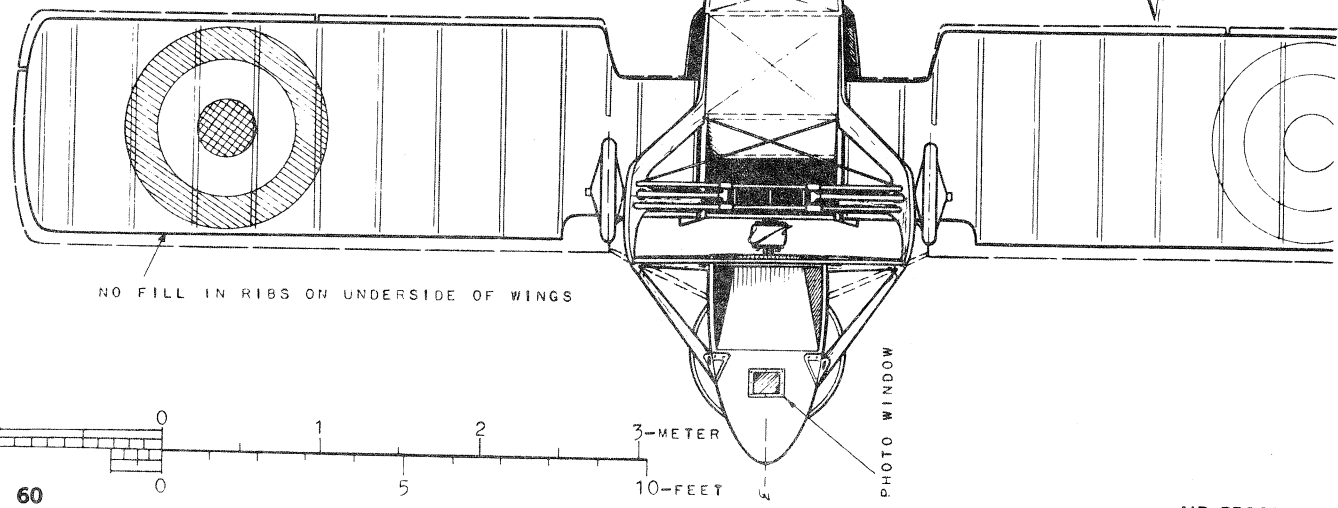
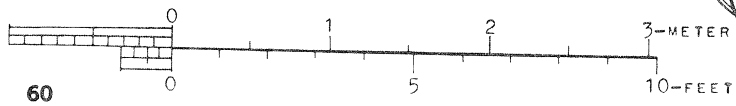


THE NACELLE HAD TO BE LOWERED WHEN THE ENGINE WAS STARTED

Early French Fighters: SPAD A.2 (1915) SCALE VIEWS BY BJORN KARLSTROM



POWER PLANT:
 SPAD A.2 - 80-HP
 LE RHÔNE ROTARY
 SPAD A.4 - 110-HP
 LE RHÔNE ROTARY

LE RHÔNE ENGINE

