

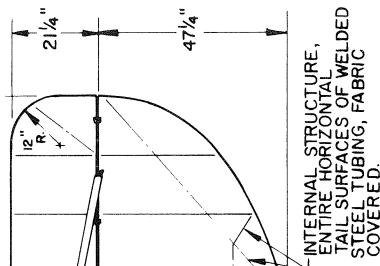
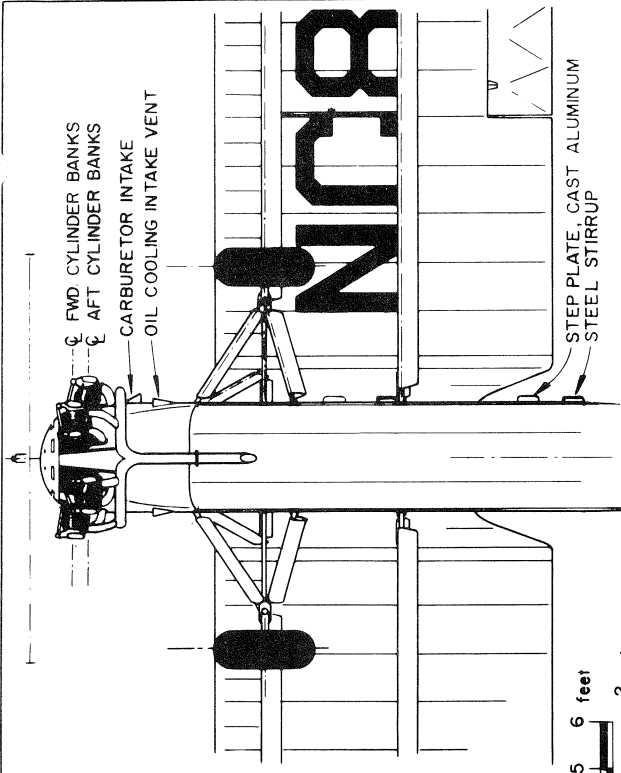
GENERAL SPECIFICATIONS.

WEIGHT EMPTY 1663 lbs. (Model C-185)
 USEFUL LOAD 702 lbs.
 GROSS WEIGHT 2365 lbs.
 TOP SPEED 118 mph (100 hp Kinner powered)
 CRUISING SPEED 92 mph
 LANDING SPEED 35 mph
 RATE OF CLIMB, INITIAL 640 ft./min. at S.L.
 SERVICE CEILING 18,000 feet
 CRUISE RANGE 500 miles
 WING AREA (incl. ailerons) 236 sq. ft.
 COLLEGIATE NC 887E, PORTRAYED,
 WAS COMPLETED MARCH 12, 1929
 POWER - CURTISS R-600 CHALLENGER
 6-CYL. RADIAL, 170 hp at 1800 rpm
 185 hp at 2000 rpm

COLORING NOTES.

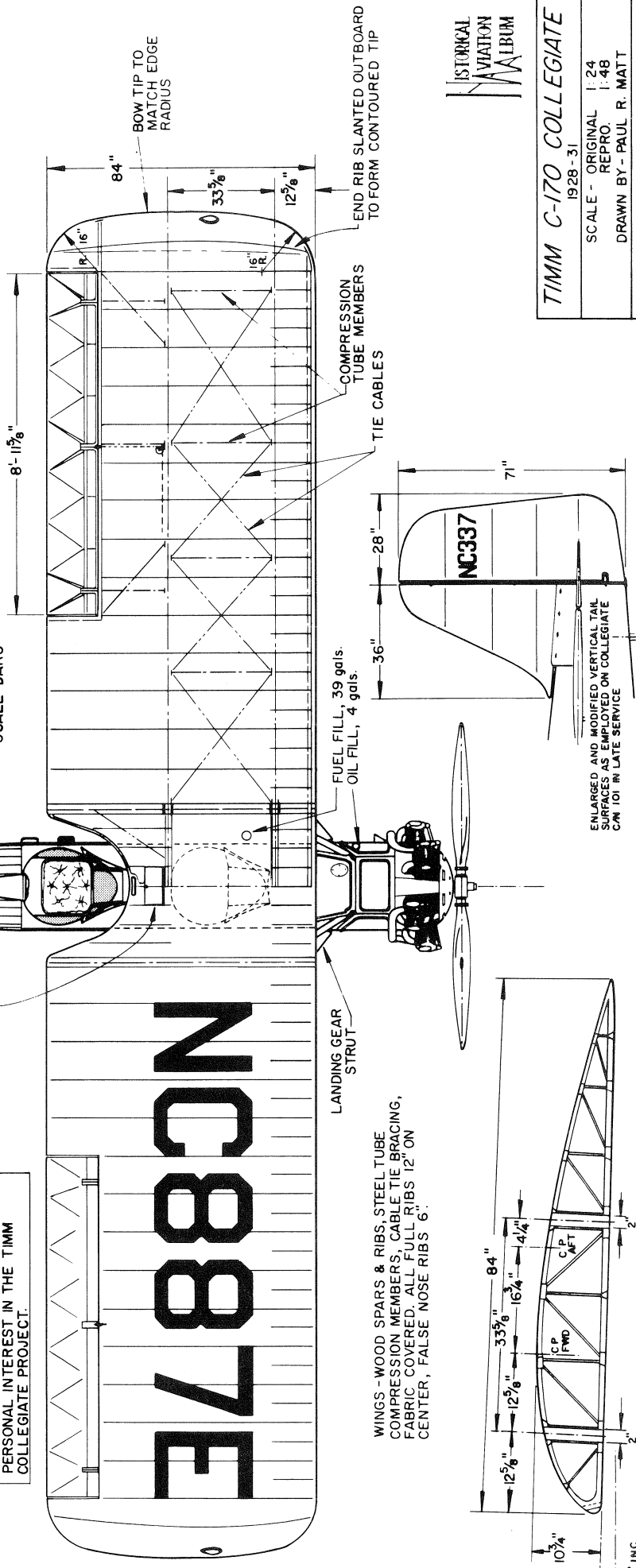
EXACT COLORING OF NC 887E IS NO LONGER
 REMEMBERED, BUT BELIEVED TO HAVE BEEN
 SILVER WINGS & TAIL SURFACES, DARK BLUE
 FUSELAGE AND BLACK DETAILS.

OUR SINCERE APPRECIATION IS
 EXTENDED TO MR. OTTO TIMM FOR HIS
 PERSONAL HELP AND INTEREST IN
 MAKING THESE DRAWINGS POSSIBLE.
 A SPECIAL THANKS ALSO TO REVEREND
 BOARDMAN C. REED FOR HIS UNTIRING
 PERSONAL INTEREST IN THE TIMM
 COLLEGIATE PROJECT.

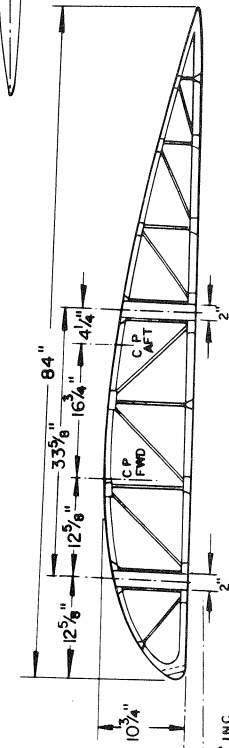


PRODUCTION STAB,
 RETRO-FITTED TO
 PROTOTYPE AFTER
 SMALLER AREA WAS
 FOUND UNSATISFACTORY

AILERON BELL CRANK
 INSPECTION HATCH



WINGS - WOOD SPARS & RIBS, STEEL TUBE
 COMPRESSION MEMBERS, CABLE TIE BRACING,
 FABRIC COVERED. ALL FULL RIBS 12" ON
 CENTER, FALSE NOSE RIBS 6".



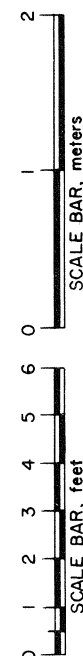
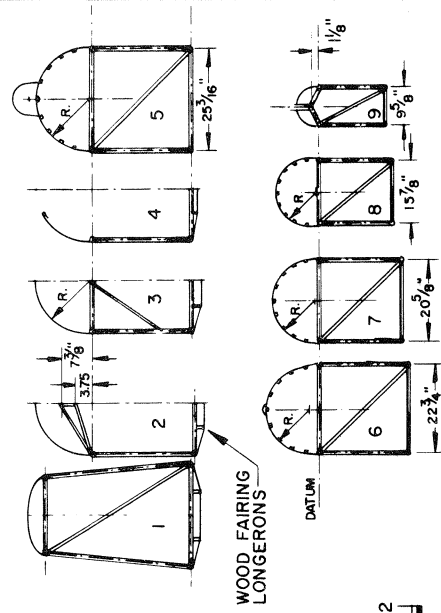
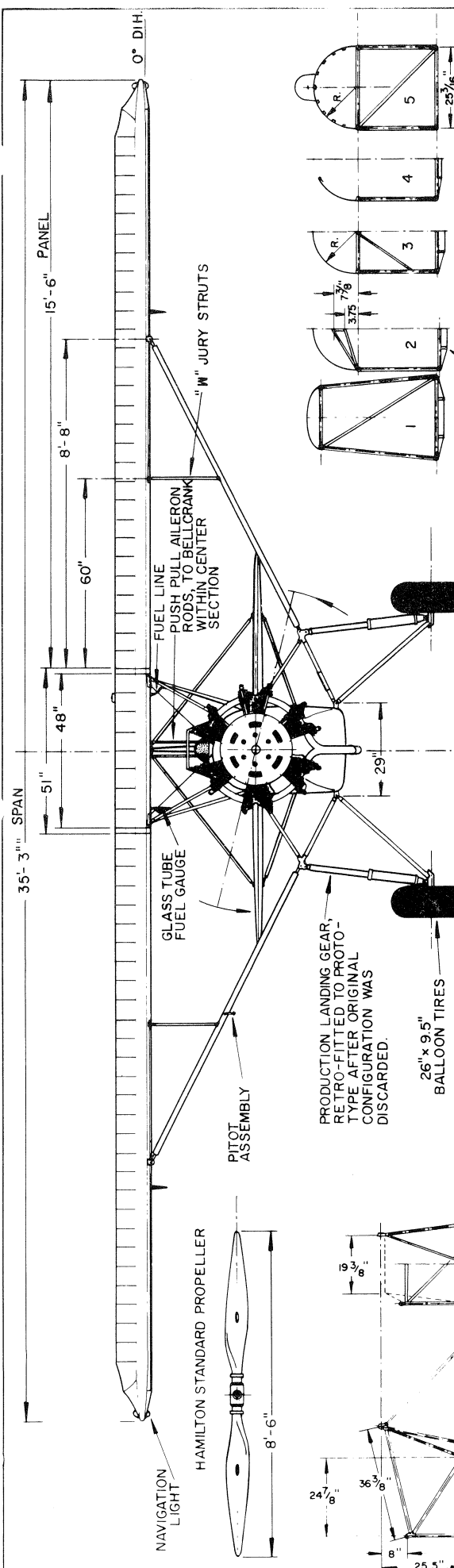
FACE & COLLINS AIRFOIL No. 4
 NACA REPORT 124
 (DRAWN TWICE SCALE)



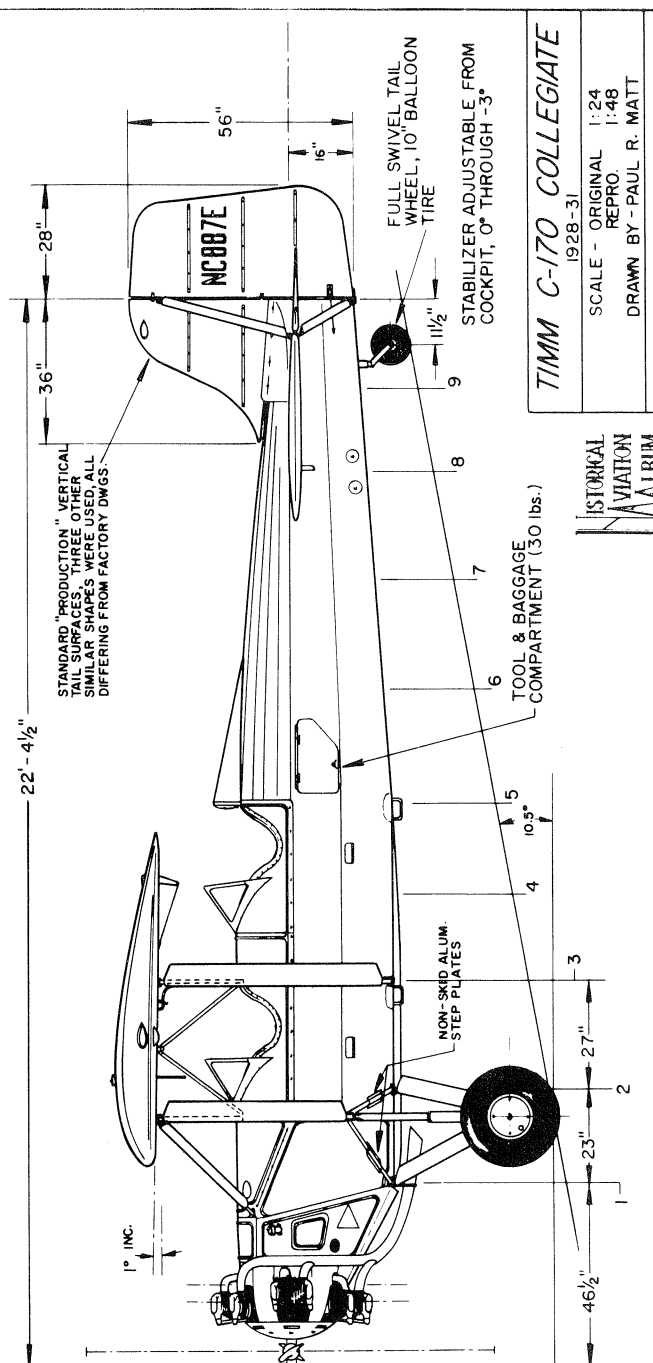
TIMM C-170 COLLEGIATE
 1928-31

SCALE - ORIGINAL 1:24
 REPRO. 1:48
 DRAWN BY - PAUL R. MATT

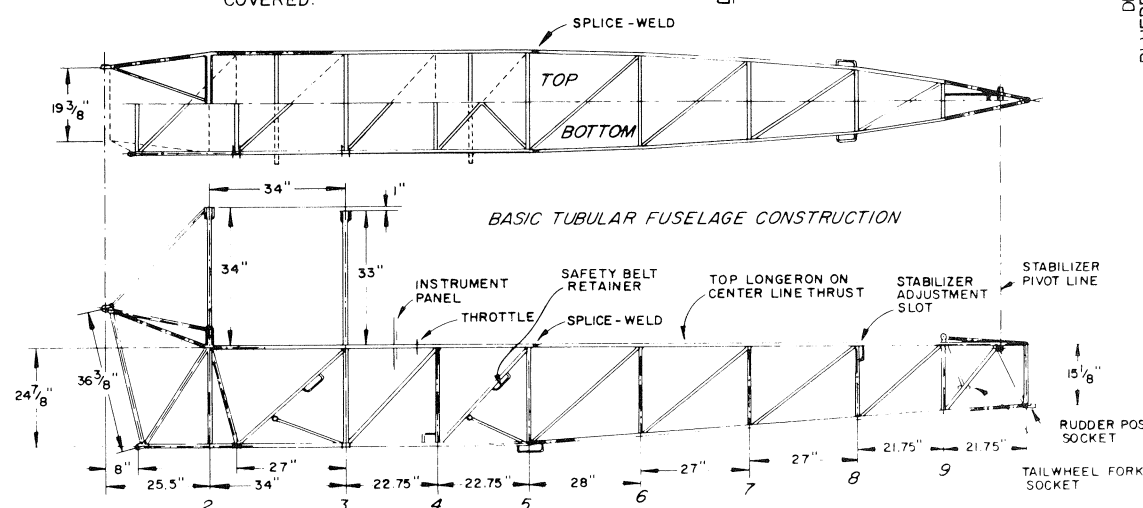
© HISTORICAL AVIATION ALBUM 1970
 P.O. BOX 33
 TEMPLE CITY, CALIF. 91780



FUSELAGE CONSTRUCTION, WELDED STEEL TUBE, WOOD FAIRED, FABRIC COVERED, COCKPIT DECKING, HEADREST & ENGINE AREA METAL COVERED.



STANDARD "PRODUCTION" VERTICAL TAIL SURFACES, THREE OTHER SIMILAR SHAPES WERE USED, ALL DIFFERING FROM FACTORY DWGS.



TIMM C-170 COLLEGIATE
1928-31

SCALE - ORIGINAL 1:24
REPRO. 1:48

DRAWN BY - PAUL R. MATT

© HISTORICAL AVIATION ALBUM 1970
P. O. BOX 33
TEMPLE CITY, CALIF. 91780

