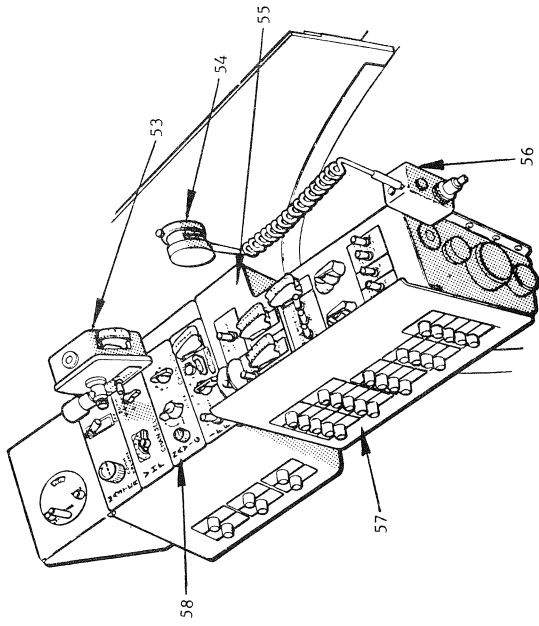
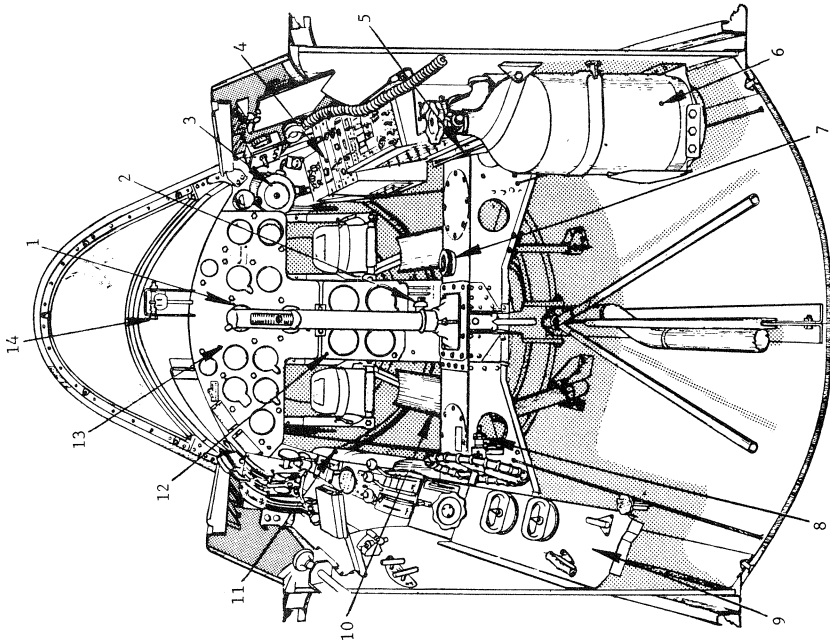


RIGHT HAND CONSOLE

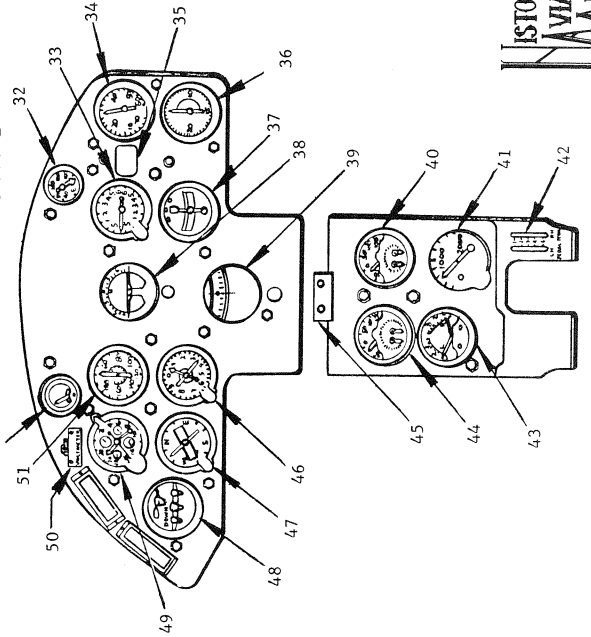


VOUGHT XF5U-1
COCKPIT LAYOUT AND INSTRUMENTATION

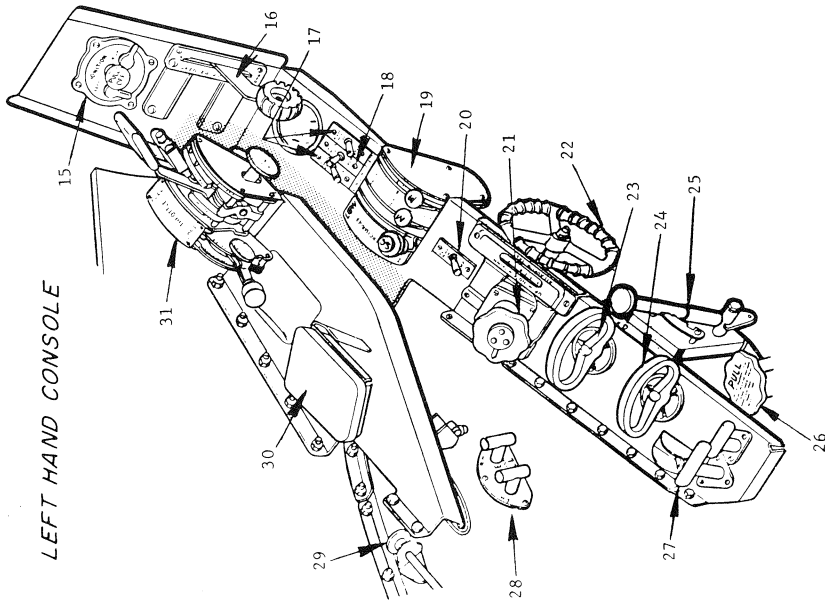
1. CONTROL STICK
2. SURFACE CONTROL LOCK
3. OXYGEN REGULATOR
4. ELECTRICAL & RADIO CONTROLS
5. CHART BOARD
6. OXYGEN EQUIPMENT
7. COCKPIT VENTILATOR CONTROL
8. EMERGENCY ARRESTING HOOK CONTROL
9. L.H. CONTROL CONSOLE
10. FOOT TROUGHS
11. MAP CASE
12. CENTER AUXILIARY PANEL
13. MAIN INSTRUMENT PANEL
14. ARRESTING GEAR CONTROL
15. IGNITION SWITCH
16. LANDING GEAR CONTROL
17. ENGINE COOLING FLAPS, SWITCH & INDICATOR
18. OIL COOLER, SWITCH & INDICATOR
19. SUPERCHARGER & MIXTURE CONTROL
20. FUEL PUMP SWITCH
21. TRIM TAB CONTROL
22. FUEL TANK SELECTOR
23. ENGINE SELECTOR
24. SHOULDER HARNESS CONTROL
25. EMERGENCY LANDING GEAR CONTROL
26. TAIL WHEEL LOCK
27. FIRE EXTINGUISHER CONTROL
28. EMERGENCY FUEL TANK PRESSURE RELEASE
- 29.



MAIN INSTRUMENT PANEL
AND AUXILIARY BOARD

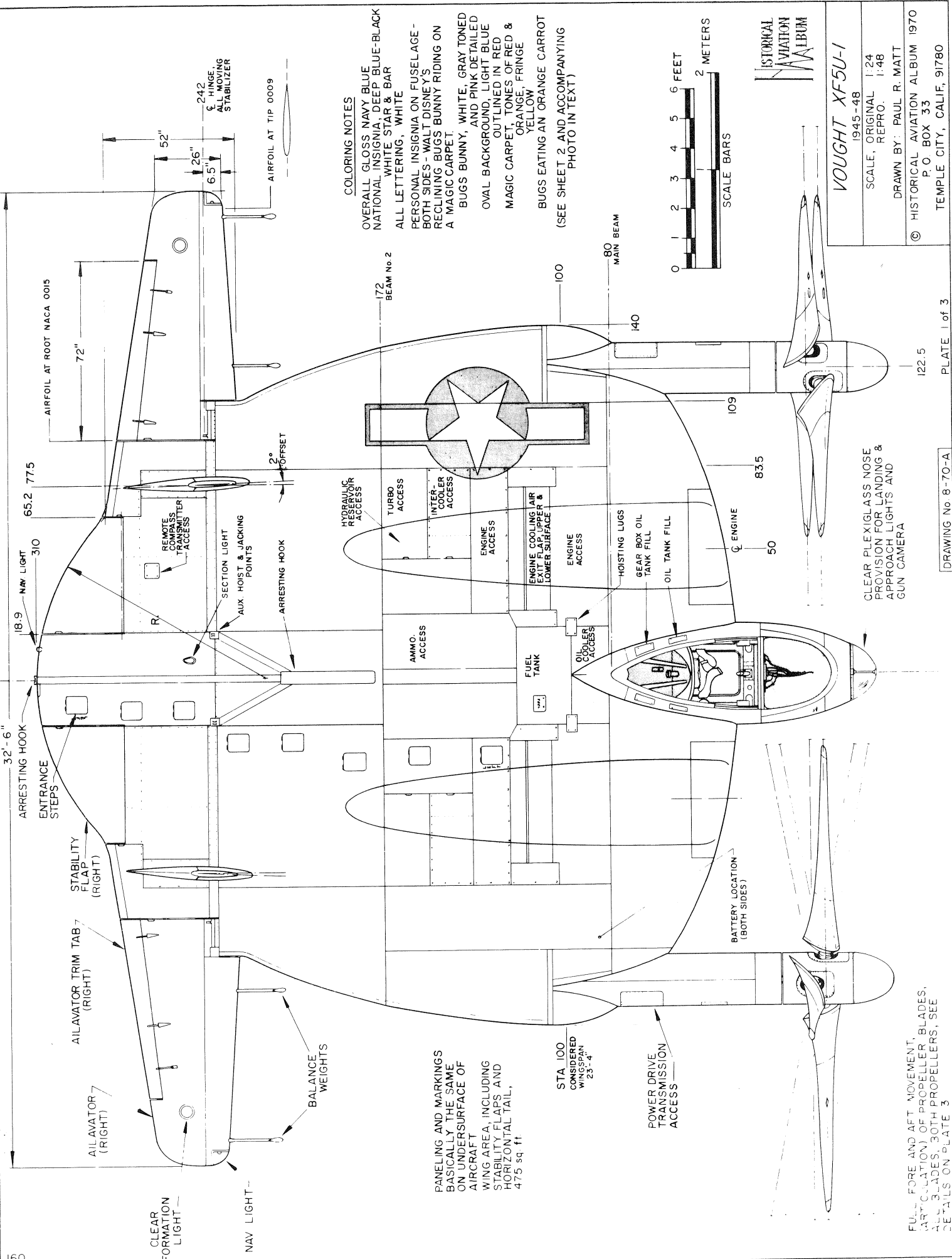


LEFT HAND CONSOLE

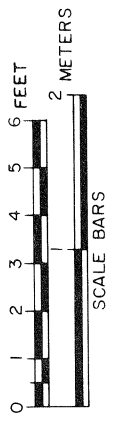


30. ARM REST
31. THROTTLE AND PROPELLER CONTROL
32. FUEL QUANTITY GAGE
33. CLIMB INDICATOR
34. MANIFOLD PRESSURE
35. FUEL RESERVE LIGHT
36. TACHOMETER
37. TURN & BANK
38. GYRO HORIZON
39. DIRECTIONAL GYRO
40. ENGINE GAGE UNIT
41. HYDRAULIC PRESSURE GAGE
42. RUDDER PEDAL POSITION INDICATOR
43. ENGINE CYLINDER TEMP. GAGE
44. ENGINE GAGE UNIT
45. ENGINE AUTOMATIC DECLUTCHING INDICATOR LIGHTS
46. ALTIMETER
47. COMPASS
48. LANDING GEAR, TAIL WHEEL POSITION INDICATOR
49. ELAPSED TIME CLOCK
50. VOLTMETER SWITCH
51. AIRSPEED INDICATOR
52. VOLTMETER
53. COCKPIT CANOPY ELECTRICAL CONTROL PANEL
54. PILOT'S JACK BOX
55. ELECTRICAL SYSTEM CIRCUIT BREAKERS
56. RADIO CONSOLE - CONTROL PANEL
- 57.
- 58.





COLORING NOTES
 OVERALL GLOSS NAVY BLUE
 NATIONAL INSIGNIA, DEEP BLUE-BLACK
 WHITE STAR & BAR
 ALL LETTERING, WHITE
 PERSONAL INSIGNIA ON FUSELAGE -
 BOTH SIDES - WALT DISNEY'S
 RECLINING BUGS BUNNY RIDING ON
 A MAGIC CARPET.
 BUGS BUNNY, WHITE, GRAY TONED
 OVAL BACKGROUND, LIGHT BLUE
 OUTLINED IN RED
 MAGIC CARPET, TONES OF RED &
 ORANGE, FRINGE
 YELLOW
 BUGS EATING AN ORANGE CARROT
 (SEE SHEET 2 AND ACCOMPANYING
 PHOTO IN TEXT)



HISTORICAL AVIATION ALBUM

VOUGHT XF5U-1
 1945-48
 SCALE, ORIGINAL 1:24
 REPRO. 1:48
 DRAWN BY: PAUL R. MATT
 P.O. BOX 33
 TEMPLE CITY, CALIF. 91780

32'-6" ARRESTING HOOK
 18.9 NAV LIGHT
 65.2 77.5 AIRFOIL AT ROOT NACA 0015
 72" AIRFOIL AT TIP 0009
 52" 26" 6.5" 242 HINGE, ALL MOVING STABILIZER
 2° OFFSET
 172 BEAM No. 2
 100 80 MAIN BEAM
 140 109 83.5 50 122.5

CLEAR FORMATION LIGHT
 NAV LIGHT
 AILAVATOR (RIGHT)
 AILAVATOR TRIM TAB (RIGHT)
 STABILITY FLAP (RIGHT)
 ENTRANCE STEPS
 REMOTE COMPASS TRANSMITTER ACCESS
 SECTION LIGHT
 AUX. HOIST & JACKING POINTS
 ARRESTING HOOK
 AMMO. ACCESS
 FUEL TANK
 COOLER ACCESS
 HOISTING LUGS
 GEAR BOX OIL TANK FILL
 OIL TANK FILL
 ENGINE ACCESS
 ENGINE COOLING AIR EXIT FLAP, UPPER & LOWER SURFACE
 ENGINE ACCESS
 INTER-COOLER ACCESS
 TURBO ACCESS
 HYDRAULIC RESERVOIR ACCESS
 BATTERY LOCATION (BOTH SIDES)
 POWER DRIVE TRANSMISSION ACCESS
 STA 100 CONSIDERED WINGSPAN 23'-4"

PANELING AND MARKINGS BASICALLY THE SAME ON UNDERSURFACE OF AIRCRAFT
 WING AREA, INCLUDING STABILITY FLAPS AND HORIZONTAL TAIL, 475 sq. ft.

CLEAR PLEXIGLASS NOSE PROVISION FOR LANDING & APPROACH LIGHTS AND GUN CAMERA
 DRAWING No. 8-70-A
 PLATE 1 of 3

FULL FORE AND AFT MOVEMENT, (ARTICULATION) OF PROPELLER BLADES, ALL 3 BLADES, BOTH PROPELLERS, SEE DETAILS ON PLATE 3

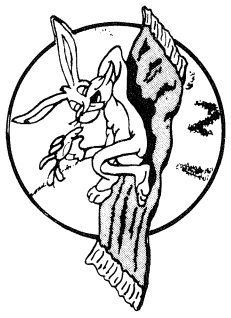
GENERAL SPECIFICATIONS.
 BASED ON ENGINEERING AND GROUND EVALUATION
 ACTUAL FLIGHT TESTS CANCELLED BY U.S. NAVY

WEIGHT, BASIC (Approx.) 14,500 lbs.
 WEIGHT, NORMAL 16,500 lbs.
 WEIGHT, MAX. LOADED 18,635 lbs.
 TAKEOFF DISTANCE, NO WIND 710 feet
 17 KNOT HEADWIND 490 feet
 CLIMB, AT 14,550 lbs 3,000 ft./min S.L.
 TO 5,000 feet
 GRADUATING DOWN TO 1,000 ft./min.
 AT 12,000 feet

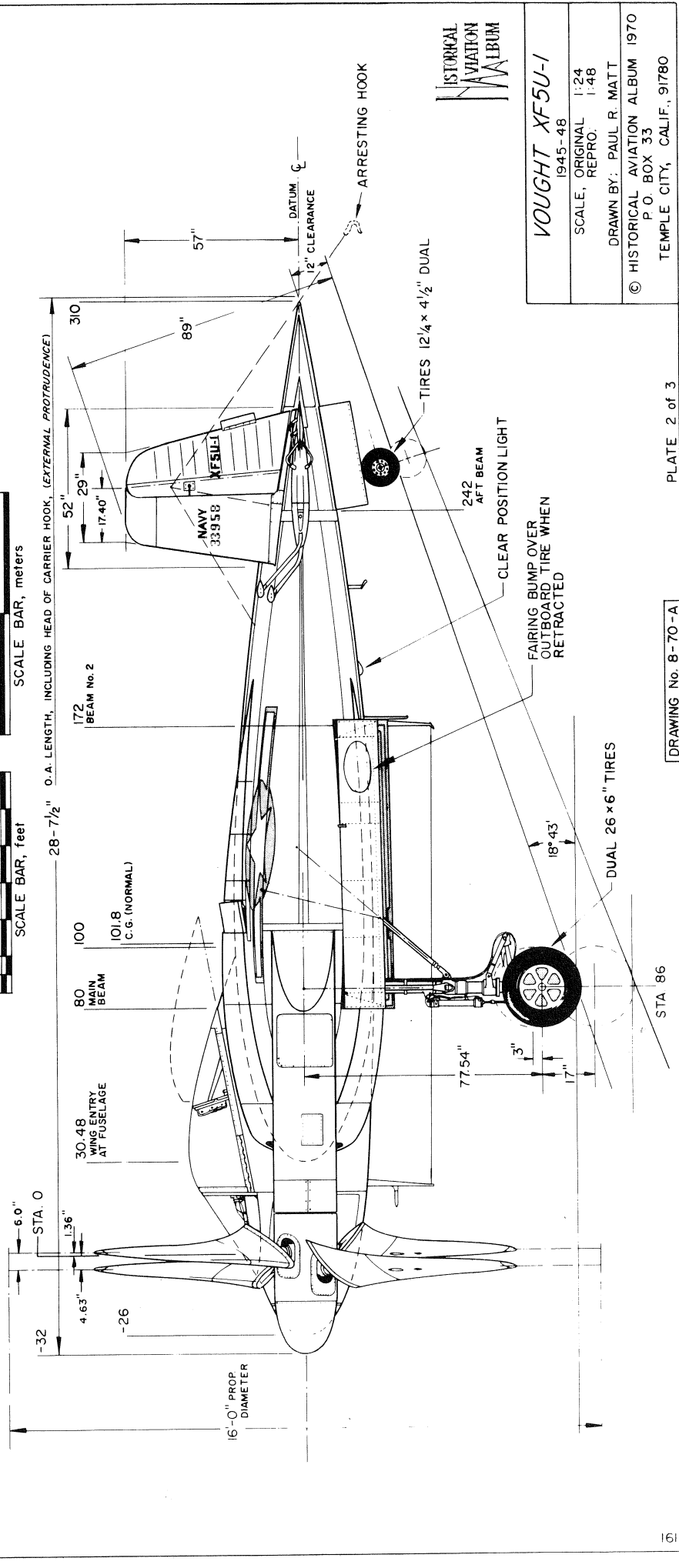
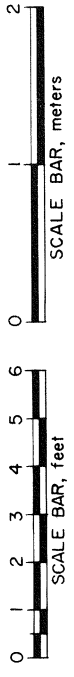
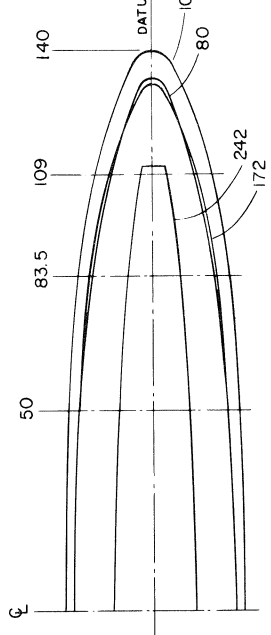
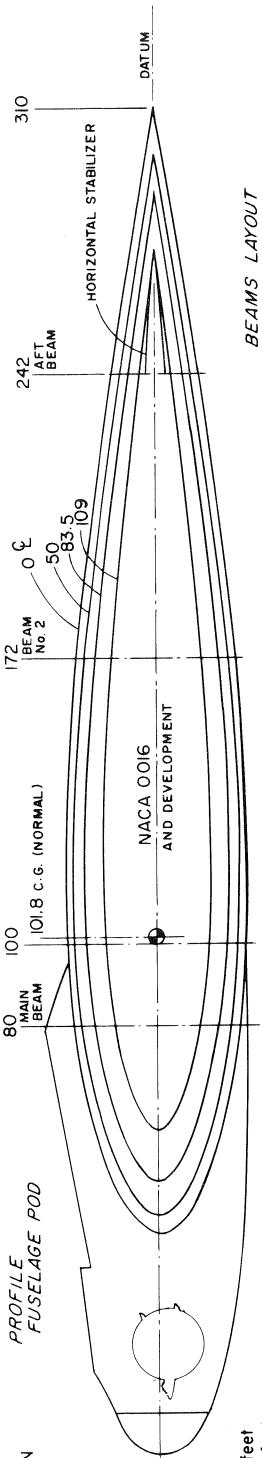
MAXIMUM SPEED, CONTINUOUS 368 mph at 15,000 feet
 RANGE, MAX (INTERNAL FUEL) 740 miles
 AT CRUISE OF 280 mph at 10,000 feet

PERFORMANCE BASED ON USE OF TWO P & W R-2000-7
 AIR COOLED RADIAL ENGINES OF
 1,350 h.p. at 2,700 r.p.m.
 1,100 h.p. at 2,550 r.p.m. (NORMAL)

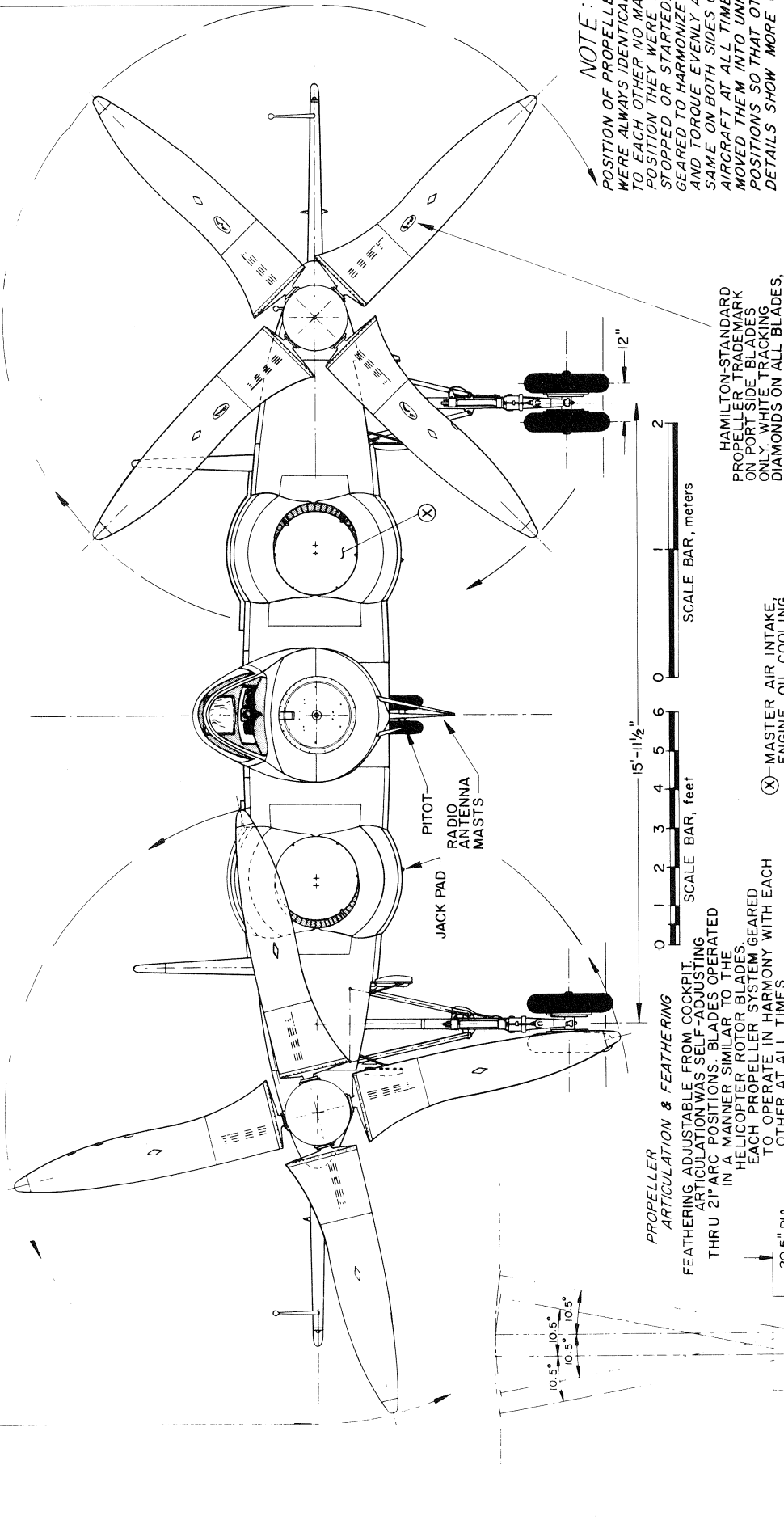
PROPOSED ARMAMENT (NEVER FITTED)
 SIX .50 CAL COLT BROWNING M.G.s, 400 R.P.G. INTERCHANGABLE
 WITH FOUR 20mm CANNON AND/OR TWO 1,000lb BOMBS OR
 TWO 125 gal. LONG RANGE EXTERNAL FUEL TANKS.
 EXTERIOR CONSTRUCTION-CHANCE VOUGHT DEVELOPED METALITE
 ALUMINUM SHEETS BONDED OVER A CORE (SANDWICH) OF Balsa
 WOOD. CONSTRUCTION WAS EXCEPTIONALLY STRONG, FINISH
 EXTREMELY SMOOTH.



PERSONA INSIGNIA
 DISC 18" DIA.
 3 x SCALE APPROX.
 FOR DETAILS SEE
 SHEET-1.



VOUGHT XF5U-1
 1945-48
 SCALE, ORIGINAL 1:24
 REPRO. 1:48
 DRAWN BY: PAUL R. MATT
 P. O. BOX 33
 TEMPLE CITY, CALIF., 91780



NOTE:
 POSITION OF PROPELLER BLADES WERE ALWAYS IDENTICAL OR RELATED TO EACH OTHER NO MATTER WHAT POSITION THEY WERE TURNING IN, STOPPED OR STARTED. THEY WERE GEARED TO HARMONIZE AIR FLOW AND TORQUE EVENLY AND THE SAME ON BOTH SIDES OF THE AIRCRAFT AT ALL TIMES. WE HAVE MOVED THEM INTO UNRELATED POSITIONS SO THAT OTHER AFT DETAILS SHOW MORE CLEARLY.

PROPELLER ARTICULATION & FEATHERING
 FEATHERING ADJUSTABLE FROM COCKPIT. ARTICULATION WAS SELF-ADJUSTING THRU 21° ARC POSITIONS. BLADES OPERATED IN A MANNER SIMILAR TO THE HELICOPTER ROTOR BLADES. EACH PROPELLER SYSTEM GEARED TO OPERATE IN HARMONY WITH EACH OTHER AT ALL TIMES.

HAMILTON-STANDARD PROPELLER TRADEMARK ON PORT SIDE. BLADES ONLY WHITE TRACKING DIAMONDS ON ALL BLADES, YELLOW TIPPED.

OUR SINCERE APPRECIATION IS EXTENDED TO MR. CHARLES ZIMMERMAN, INVENTOR - BOON GUYTON, CHIEF TEST PILOT - WILLIAM Z. MILLER, CHIEF DRAFTSMAN - WILLIAM SCHOOLFIELD, CHIEF AERO-DYNAMICIST ON THE XF5U-1 PROJECT FOR THEIR TIME, EFFORT AND INTEREST IN REVIEWING, CORRECTING AND COMMENTING ON THESE DRAWINGS AND THE ACCOMPANYING ARTICLE BY ARTHUR L. SCHOENI. A SPECIAL THANKS TO MR. SCHOENI FOR MAKING IT COME ABOUT. THE ASSISTANCE OF THESE MEN IS HIGHLY VALUED, MAKING THIS A JOINT EFFORT AND THE VIEWS HEREWITH AS ACCURATE AS POSSIBLE.



VOUGHT XF5U-1	
1945-48	
SCALE, ORIGINAL	1:24
REPRO.	1:48
DRAWN BY: PAUL R. MATT	
P.O. BOX 33	
TEMPLE CITY, CALIF., 91780	

DRAWINGS PREPARED FROM CV 401000 PRINTS AND RELATED AND PERSONAL CHECKING BY WILLIAM Z. MILLER - XF5U-1 CHIEF DRAFTSMAN