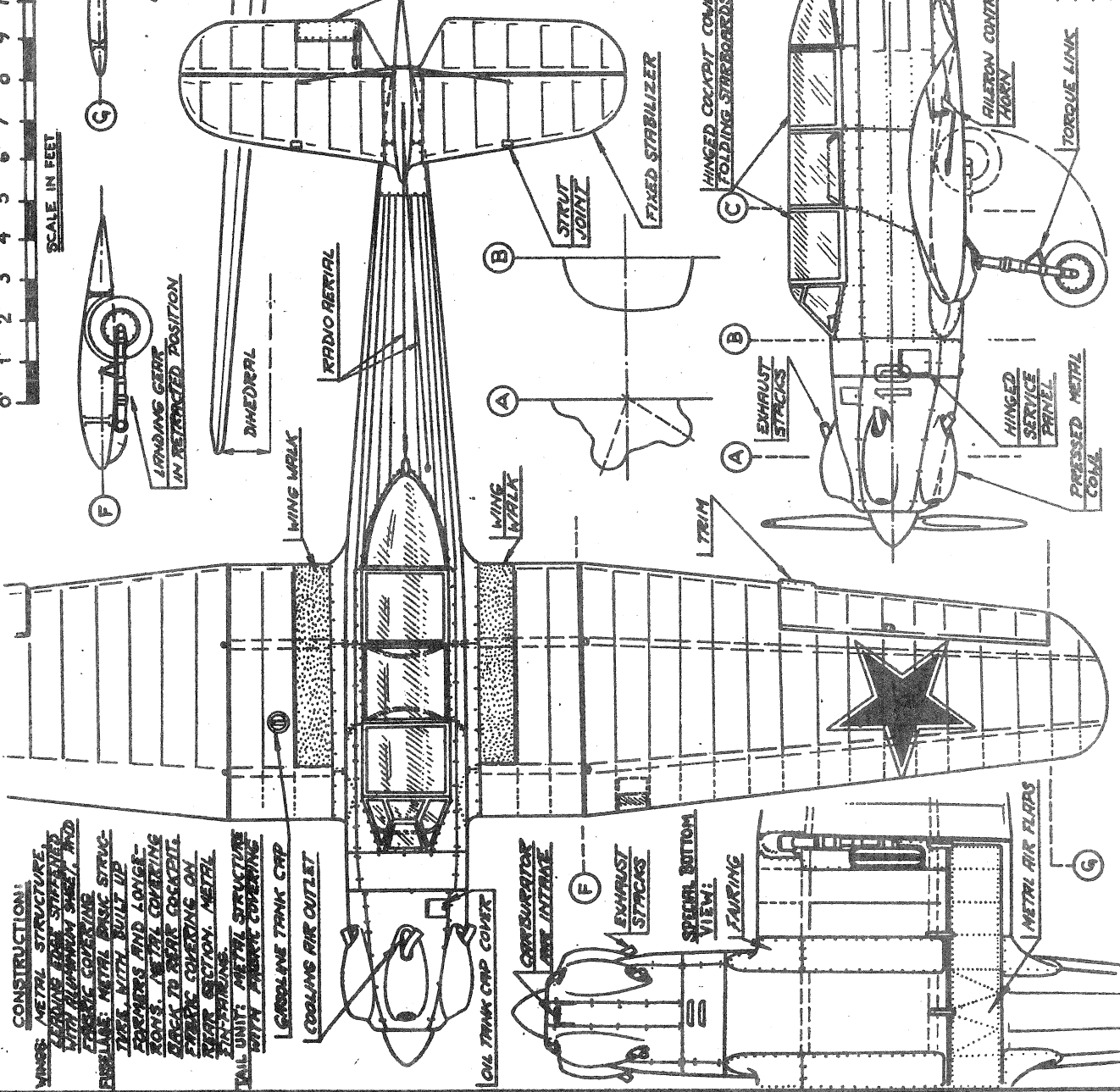
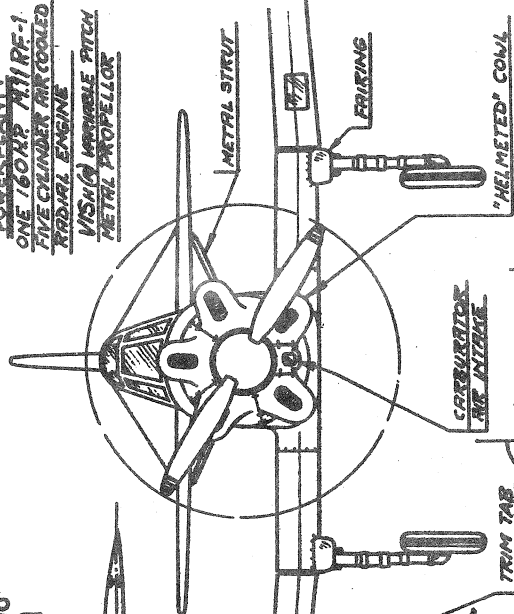
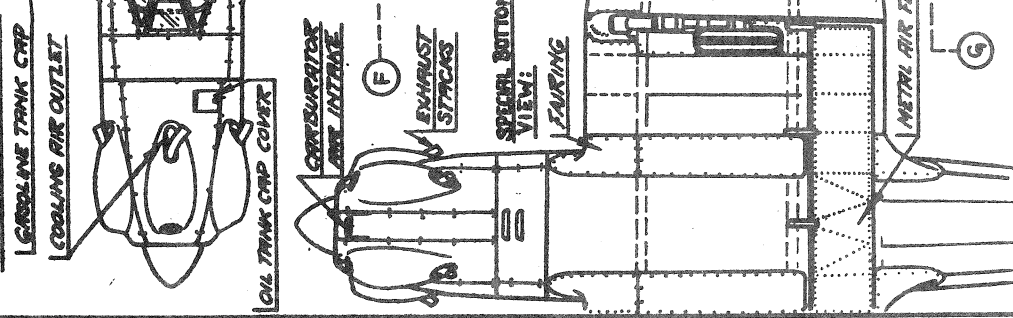


POWERPLANT:
 ONE 160HP M1RF-1
 FIVE CYLINDER AIR-COOLED
 RADIAL ENGINE
 VISHVA VARIABLE PITCH
 METAL PROPELLOR



CONSTRUCTION:
 WINGS: METAL STRUCTURE,
 LEADING EDG STRIPPER
 WITH ALUMINUM SHEET, AND
 FABRIC COVERING
 FUSELAGE: METAL BASIC STRUC-
 TURE WITH BUILT UP
 FORMERS AND LONGER-
 RONS. METAL COVERING
 BACK TO REAR COCKPIT.
 FABRIC COVERING ON
 REAR SECTION. METAL
 FIN-FININGS.
 TAIL UNIT: METAL STRUCTURE
 WITH FABRIC COVERING



YAK-18 (Yak-18)
 RUSSIAN TRAINER
 SCALE: 1/4" = 1'-0"
 DRAWN BY:
 S. M. K. K. K.

COLOR SCHEME:
 ALL ALUMINUM OR
 DARK BROWN. RED
 STARS OUTLINED
 WITH WHITE.